



## Agenda

### OLD BUSINESS

1. Request of Grant Russel to review possibility of eliminating one traffic lane and adding parking on Beech Street between East Main Cross Street and East Sandusky Street.

02/21/2017

Director Schmelzer stated that almost every time he turns onto Beech Street there is a delivery truck parked in one of the lanes. Councilman Monday asked how many parking spaces we would gain by eliminating a lane of traffic on Beech Street. Director Schmelzer stated approximately 15 parking spaces could potentially be created. Chief Eberle suggested a loading zone in each block if we move forward with the request to accommodate the delivery trucks.

Motion to table request until Engineering Department can develop a parking plan for Beech Street from East Main Cross Street to East Sandusky Street including one loading zone on the north side of the intersection of Beech Street and East Crawford Street, by Director Schmelzer, second by Chief Eberle. Motion passed 4-0.

03/20/2017

Motion to lift from table, by Director Schmelzer, second by Thomas. Motion passed 5-0.

Talked about putting parking on Beech. Thomas put together exhibit for additional parking on Beech. Can add a total of 15 parking spaces from Main Cross to Sandusky Street on Beech Street. Discussion ensued regarding flow of traffic on Beech Street. Schmelzer asked Thomas to take map and take same parking configuration but move it over to east and west and show the alleys up to Main Street and create pdf and put arrows on it as to which way motorists have to travel as posted now, then email out to commission members for review at next meeting.

Motion to table so that Thomas has a chance to put exhibit together so that if we are going to add parking to beech that we do so after looking at the full traffic pattern in the area, by Director Schmelzer, second by Councilman Monday. Motion passed 5-0.

Give copy of revised exhibit to larger property owners that abut Beech Street and have them attend the next Traffic Commission meeting.

04/17/2017

Motion to lift item from table, by Thomas, second by Councilman Monday. Motion passed 4-0.

Need to wait to make a decision until large property owners have been notified and invited to the meeting.

Motion to table request, by Councilman Monday, second by Lt. Dunbar. Motion passed 4-0.

2. Request of Tom DeMuth to review crosswalk placement at the intersection of Tiffin Avenue and Croy Avenue due to visibility issue on the northwest corner.

03/20/2017

Discussion ensued regarding options to alleviate issue. Demuth suggested to delay the green light to allow pedestrian traffic to start across prior to vehicle traffic. Maybe place a No Right Turn on Red sign to help alleviate. Mitigate risk and worth looking at. Last resort is to redo curb and ramp on the other side of the box.

Motion to review the timing of the traffic signal to see if a delay in the green signal for southbound thru traffic can be facilitated in order to create additional visibility for a pedestrian in the crosswalk, by Director Schmelzer, second by Thomas. Motion passed 5-0.

Review results and bring back to Traffic Commission next month.

04/17/2017

Demuth stated that he changed the timing of the traffic signal, but has not been able to monitor. Will be doing maintenance next month in the area and will be able to monitor to determine if it is helping. Demuth stated they did test the light and they were able to walk to the second lane of traffic before the green light signaled for motorists.

3. Request of Aaron Baxter to make Sherry Street from Pearl Street to Sixth Street one way northbound.

04/17/2017

Mr. Baxter stated that Sherry Street is narrow, two cars cannot pass at the same time. It is causing erosion on both sides of the street.

Mr. Baxter inquired if the postal route needs to be considered when determining the direction of a one way. Councilman Monday stated that we need to be assured that the residents on the street are in favor of changing Sherry Street to one way. Mr. Baxter is responsible to obtain signatures of residents in favor of the one way.

Motion to table request until Mr. Baxter obtains signatures of residents in favor of changing Sherry Street to one way, and invite a representative of the US Post Office to address issue of postal route to the next meeting, by Councilman Monday, second by Chief Eberle. Motion passed 4-0.

4. Request of Brian Thomas, City Engineer, to review crosswalks at Trenton Avenue and Bolton Street and West Main Cross Street and Liberty Street.

04/17/2017

Thomas stated that the crosswalk at W. Main Cross St. and Liberty St. crosses four lanes of traffic. May have increased use due to the new Kan Du Art Studio. Lt. Dunbar stated that the Police Department encourages people to cross at crosswalks. Chief Eberle stated that we should have flashing beacons added to this crosswalk. Demuth stated that he can lay the foundation, and then we can decide later if we want to install the flashing beacons.

Thomas stated that we have the same issue at Trenton Avenue and Bolton Street. The crosswalk crosses five lanes of traffic. There is a significant distance to the next signalized intersection. Lt. Dunbar stated that he has less objections about removing this crosswalk than the Main Cross/Liberty crosswalk. Thomas stated that he can plan on putting the ramps in and then we can decide if we want to replace the crosswalks at the next meeting.

Motion to prepare curb ramps at the intersections of West Main Cross Street and Liberty Street and Trenton Avenue and Bolton Street, and table the request to review crosswalks and decide if crosswalks should remain and if any signalization is needed, by Chief Eberle, second by Thomas. Motion passed 4-0.

## **NEW BUSINESS**

1. Request of Councilman Ron Monday to review the left turn signalization from Fostoria Avenue onto Tiffin Avenue.
2. Request of Councilman John Harrington to review the traffic pattern around Jefferson School.
3. Request to remove "Reserved Parking - WORC Staff Only" designation for the parking spaces at 351 South West Street.
4. Request of City of Findlay to review West Main Cross Street parking and traffic pattern from South Main Street west to the railroad tracks.
5. Request of Dan Budke, 719 South Main Street, to permanently remove three parking spaces in front of 719 and 725 South Main Street.

## Hancock County GIS



### Notes

Request to review left turn signalization from Fostoria Avenue onto Tiffin Avenue.

## Hancock County GIS



### Notes

Request to review left turn signalization from Fostoria Avenue onto Tiffin Avenue.

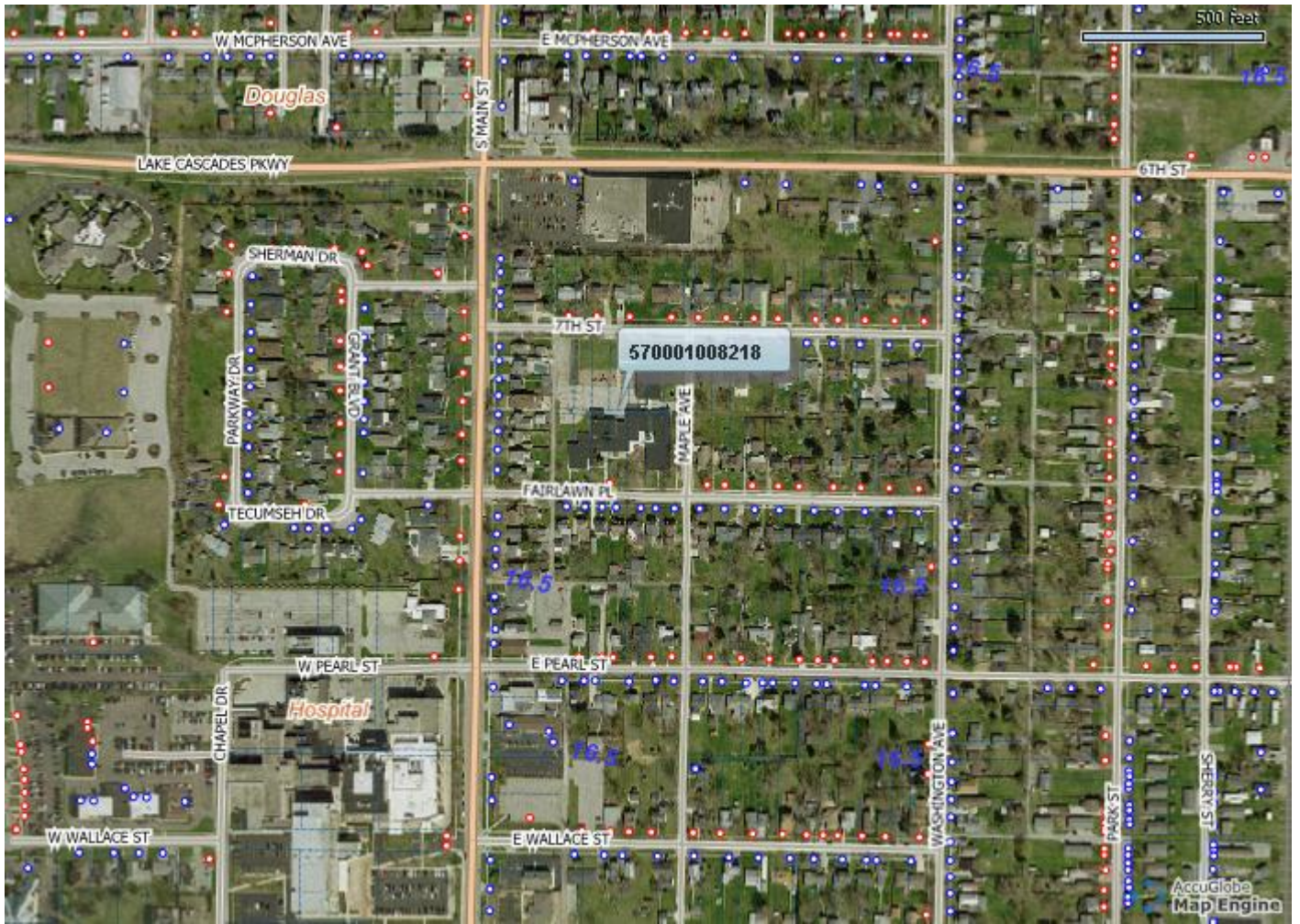
### Hancock County GIS



#### Notes

Request to review traffic pattern around Jefferson School.

## Hancock County GIS



### Notes

Request to review traffic pattern around Jefferson School.

### Hancock County GIS



#### Notes

Remove WORC Personnel Parking Only designation and make 2 hour parking spaces.

To: Tim Mayle, Director Economic Development,  
Findlay-Handcock Economic Development  
From: Brad Strader, PTP, Senior Transportation  
Planner MKSK  
Date: May 8, 2017  
Subj: West Main Cross project



681 WEST FOREST AVE.  
DETROIT, MI 48201  
248.867.8942

As you are aware, MKSK recently completed a plan to identify catalytic projects to help stimulate development, integrate recommendations of the flood mitigation program into a plan for development and public spaces, and improve connections between the downtown and the University of Findlay. This plan was prepared for your organization under the direction of a committee that included city officials, business leaders, residents, and staff from the city and the regional planning commission.

One area of focus in the plan was West Main Cross. The current width of West Main Cross between the rail crossing and Main Street is generally 57 feet, curb-to-curb. Per the recent traffic study prepared by DLZ, the level of service for the signalized intersections of West Main Cross at West and Cory Streets is LOS A, and at Main Street a LOS C (refer to page 14 of the August 2014 Downtown Findlay Transportation Plan).

The cross section varies – east of the rail crossing there is on-street parking on both sides, in the middle segment there are two 12 foot travel lanes in each direction with on-street parking on the south side only. At the approach to Main Street there are two westbound travel lanes, a center turn lane, an eastbound through lane and a very long right-turn lane. Current average daily traffic volumes along West Main Cross are around 13,000 vehicles per day. This is well below the design capacity of a 4/5 lane street but within the capacity of a three lane cross section.

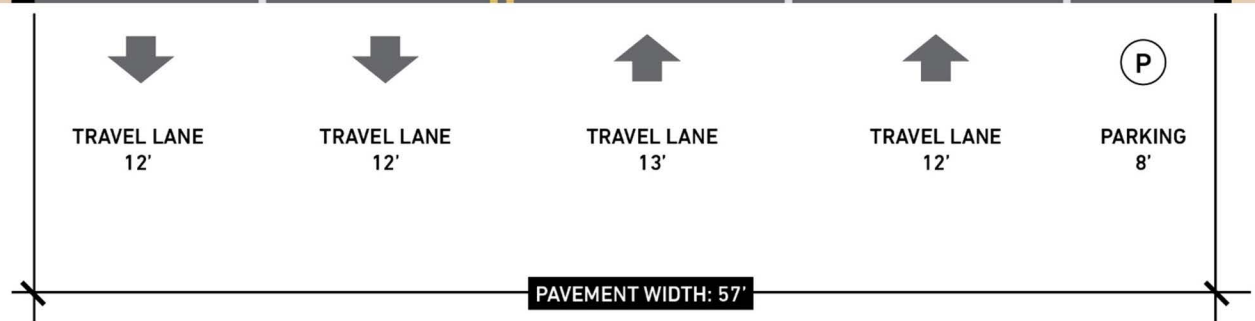
One recommendation of the Plan is to reallocate the curb-to-curb design of West Main Cross from the rail crossing to the approach to Main Street (see attached sketch). This is based on the following:

1. One goal of the city is to create a more walkable downtown that is safe and convenient for pedestrians and bicyclists, while retaining an acceptable level of service for vehicles. Another goal is to add more on-street parking to help meet the needs of the new restaurants and businesses that have been reinvesting or opening since Marathon Petroleum announced its significant downtown campus expansion.
2. Repurposing the lane configuration along West Main Cross will complement the downtown street redesign and Cory Street bikeway projects funded, in part, through an ODOT TAP grant.
3. Several recent and upcoming changes are expected to increase the volumes of pedestrians and bicyclists crossing West Main Cross:
  - The substantial improvements to the Performing Arts Center.
  - The promotion of the Center's parking as a free all day parking lot.
  - The upcoming improvements to Cory Street and its designation as the main bicycle connection between the downtown and the University of Findlay.
  - New developments planned along both sides of West Main Cross east of the rail line.
4. The capacity abruptly tapers to one lane in each direction at the rail crossing. For westbound traffic this creates an undesirable movement where autos exceed the speed limit jockeying to get in front of other vehicles, especially trucks, before the taper. The re-striping as shown would retain a more continuous cross section of one lane in each direction to avoid those maneuvers which are not suitable in a downtown environment.
5. Given the radii needs for trucks turning onto westbound West Main Cross and the apparent need for eastbound traffic to have a center-, through-, and right- turn lanes, the cross section for the first block west of Main Street would likely need to remain in its current configuration (i.e. the intersection level of service would remain as is).



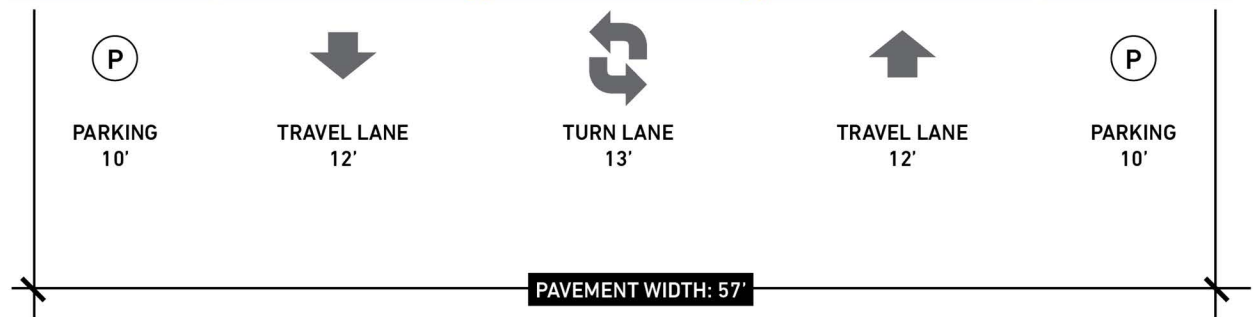
# 1 - West Main Cross

EXISTING CONDITIONS: 13,000 AADT



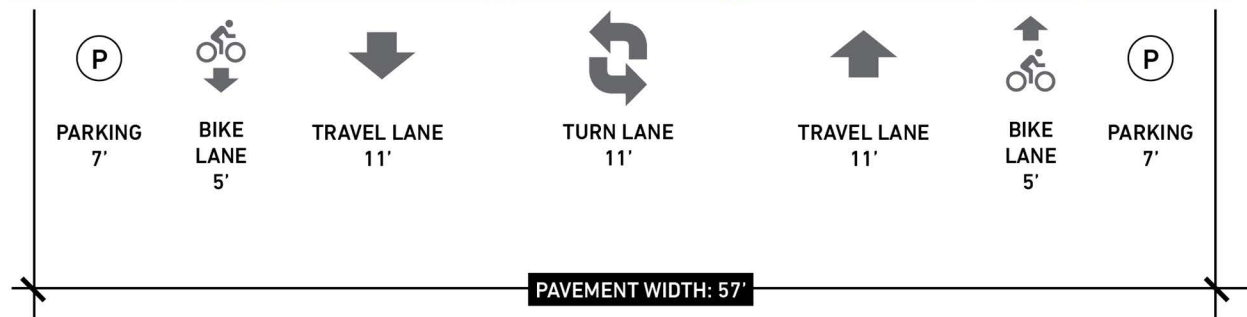
# 1 - West Main Cross

IMMEDIATE



# 1 - West Main Cross

SHORT TERM: OPTION



# 1 - West Main Cross

LONG TERM: OPTION 1



# 1 - West Main Cross

LONG TERM: OPTION 2



## Kathy Launder

---

**From:** Russel, Grant <grussel@findlayohio.com>  
**Sent:** Friday, May 05, 2017 4:22 PM  
**To:** TrafficCommission@findlayohio.com  
**Cc:** dbudke@hotmail.com; Thomas, Brian; Klein, tom  
**Subject:** Request to remove parking spaces in front of 719 S. Main St.

Traffic Commission -

This request is being made on behalf of Dan Budke who resides at 719 S. Main St. Dan owns the two properties located north of Superior Cleaners (719 & 725 S. Main St.). The decorative concrete between the sidewalk and the curb in that area was installed, at Dan & Superior Cleaner's expense, during a previous S. Main St. reconstruction effort. Dan continues maintenance, including all snow removal, of this area at his expense.

Dan and I met w/ City Engineer Brian Thomas on Friday, May 5 to discuss ideas Dan had for the south gateway into downtown at S. Main St. & Lima Ave. Per Brian's observation, any idea for such a gateway would require the removal of some or all three of the parking spaces in front of 719 / 725 S. Main St. and extending the curb towards the street. Numerous options were discussed for what could go into this space however these remained at a very conceptual level; all were in agreement that we needed to start with the Traffic Commission.

Dan mentioned a few reasons additional reasons to support this request:

- the spaces are rarely used, especially now that the parking structures at Marathon Petroleum have opened
- many cars turning north onto S. Main St. from eastbound Lima do so at speeds that take them into the curb lane and beyond. We (Dan, Brian & I) observed this numerous times during our brief meeting. Extending the curb out in this area would likely have the same 'traffic calming' effect on cars as do bump-outs.
- when cars parked in these spots during Marathon's construction project, Dan (and his family) found it very difficult and dangerous enter S. Main St. from their driveway their line of sight was obscured.
- the widened 'sidewalk' in this area would be similar to the sidewalk area in front of the new Marathon Green.

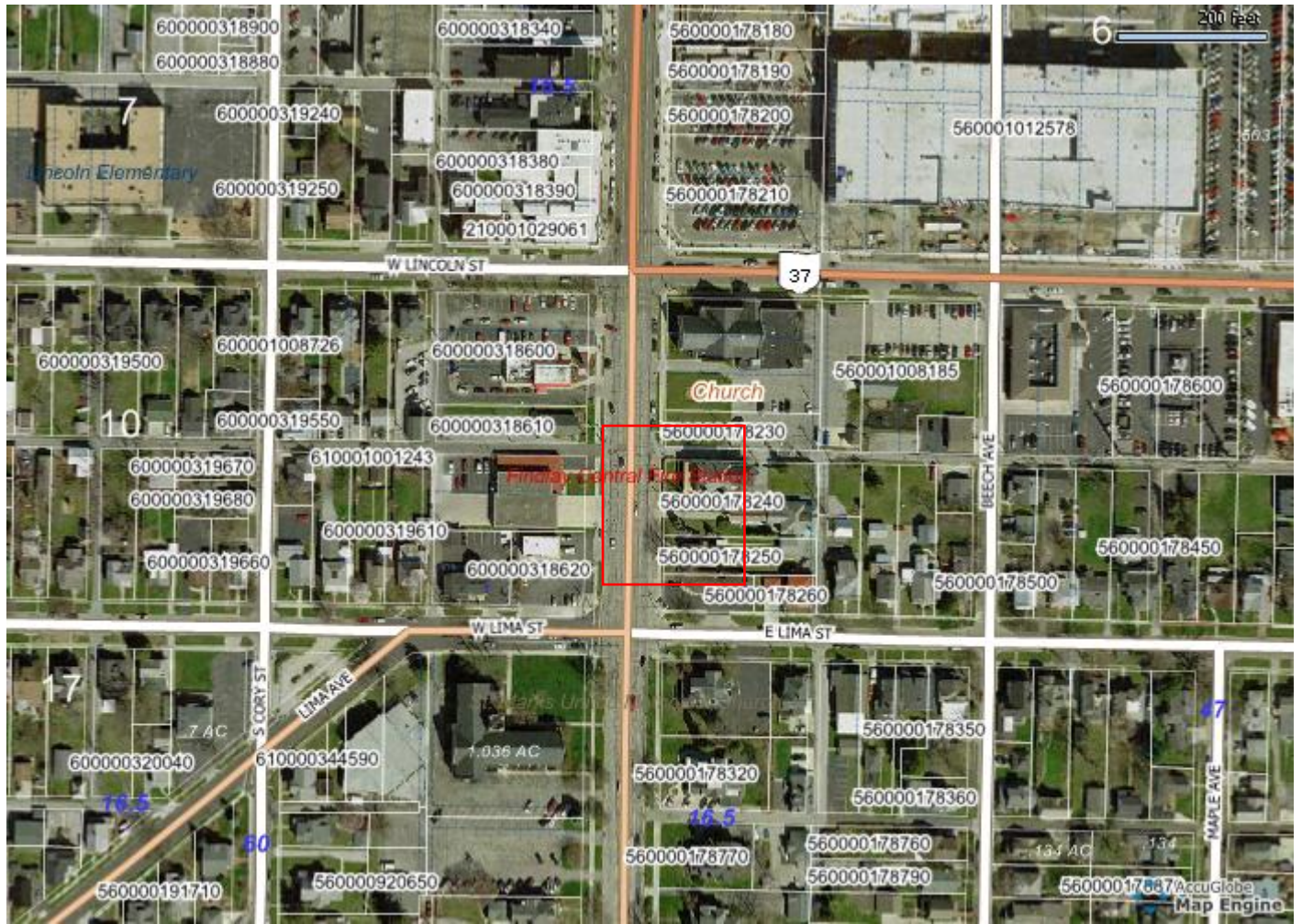
Therefore, I request that the three parking spaces in front of 719 & 725 S. Main St be permanently removed. The removal could be physically completed as part of the S. Main Street TAP project construction.

Sincerely,

Grant C. Russel  
Findlay City Council, at-large  
[grussel@FindlayOhio.com](mailto:grussel@FindlayOhio.com)  
[www.FindlayOhio.com](http://www.FindlayOhio.com)  
419.422.6875

CC. Dan Budke  
Brian Thomas  
Tom Klein, Ward 4 Councilman

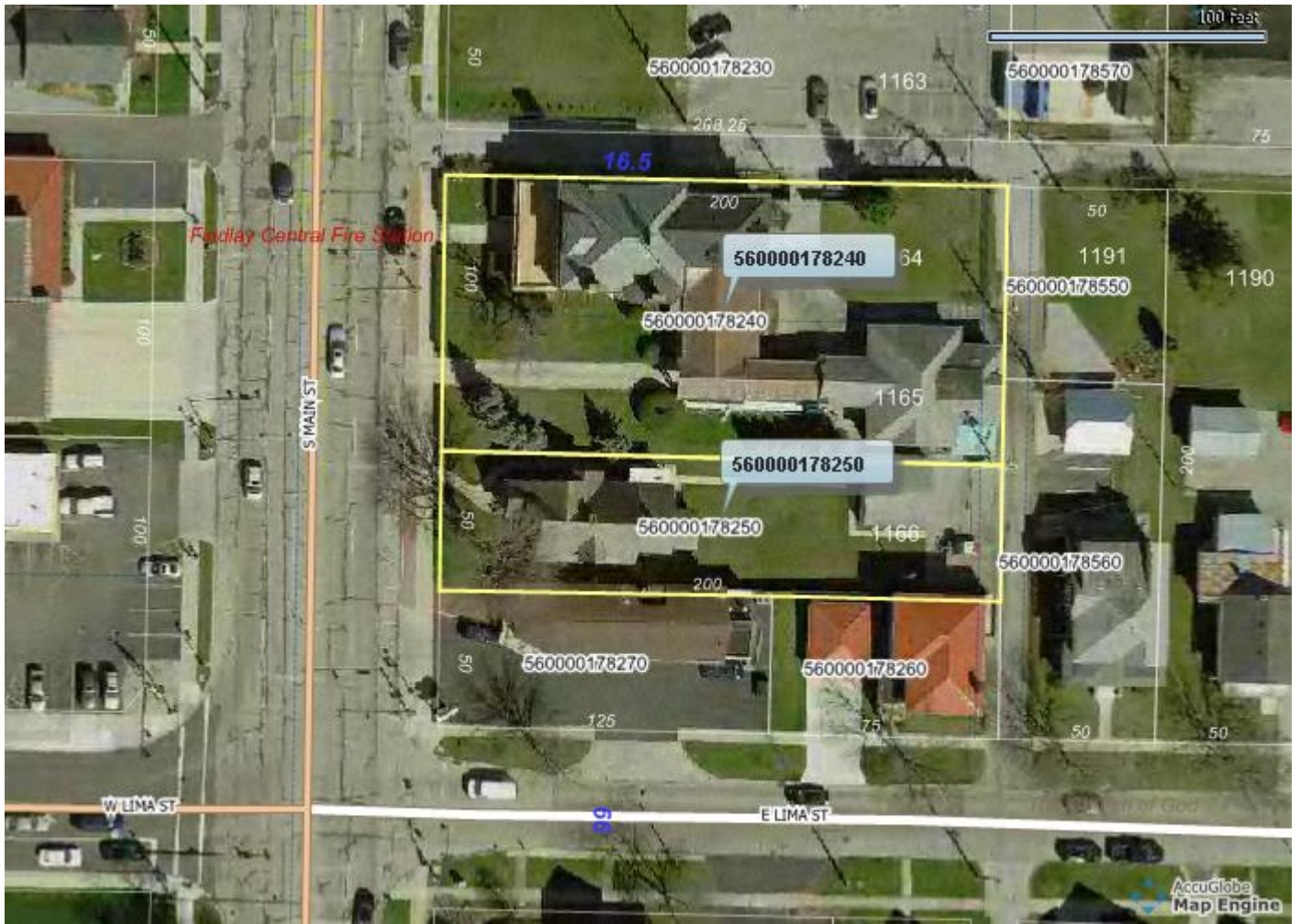
### Hancock County GIS



#### Notes

Request to permanently remove three parking spaces in front of 719 and 725 South Main Street.

### Hancock County GIS



#### Notes

Request to permanently remove three parking spaces in front of 719 and 725 South Main Street.