



Agenda

OLD BUSINESS

1. Request for additional signals at Sandusky Street and Main Street.

5/16/2016

Schmelzer stated that a traffic camera was placed facing one direction at this intersection for peak traffic. It will then be placed facing the other direction at the intersection. Once the data collected from the video is reviewed, it will be brought back to Traffic Commission for consideration. Item remains tabled.

08/15/2016

DeMuth stated that he needs to convert the video files for review. Item remains tabled.

10/17/2016

Item remains tabled.

NEW BUSINESS

1. Request of resident to consider installing stop signs at the north/south alley just east of South Main Street between First Street and Hancock Street.
2. Request of Tom DeMuth to revisit Cooper Tire & Rubber Company request for pedestrian crossing signs in crosswalks on Lima Avenue.
3. Request of Matt Stoffel, City of Findlay Public Works Superintendent, to remove the 2 hour parking restriction on Second Street in front of 404 Second Street, the former site of Sinks Flowers.

Kathy Launder

From: Paul Schmelzer <pschmelzer@findlayohio.com>
Sent: Monday, November 14, 2016 4:56 PM
To: Kathy Launder
Subject: traffic commission

Kathy,

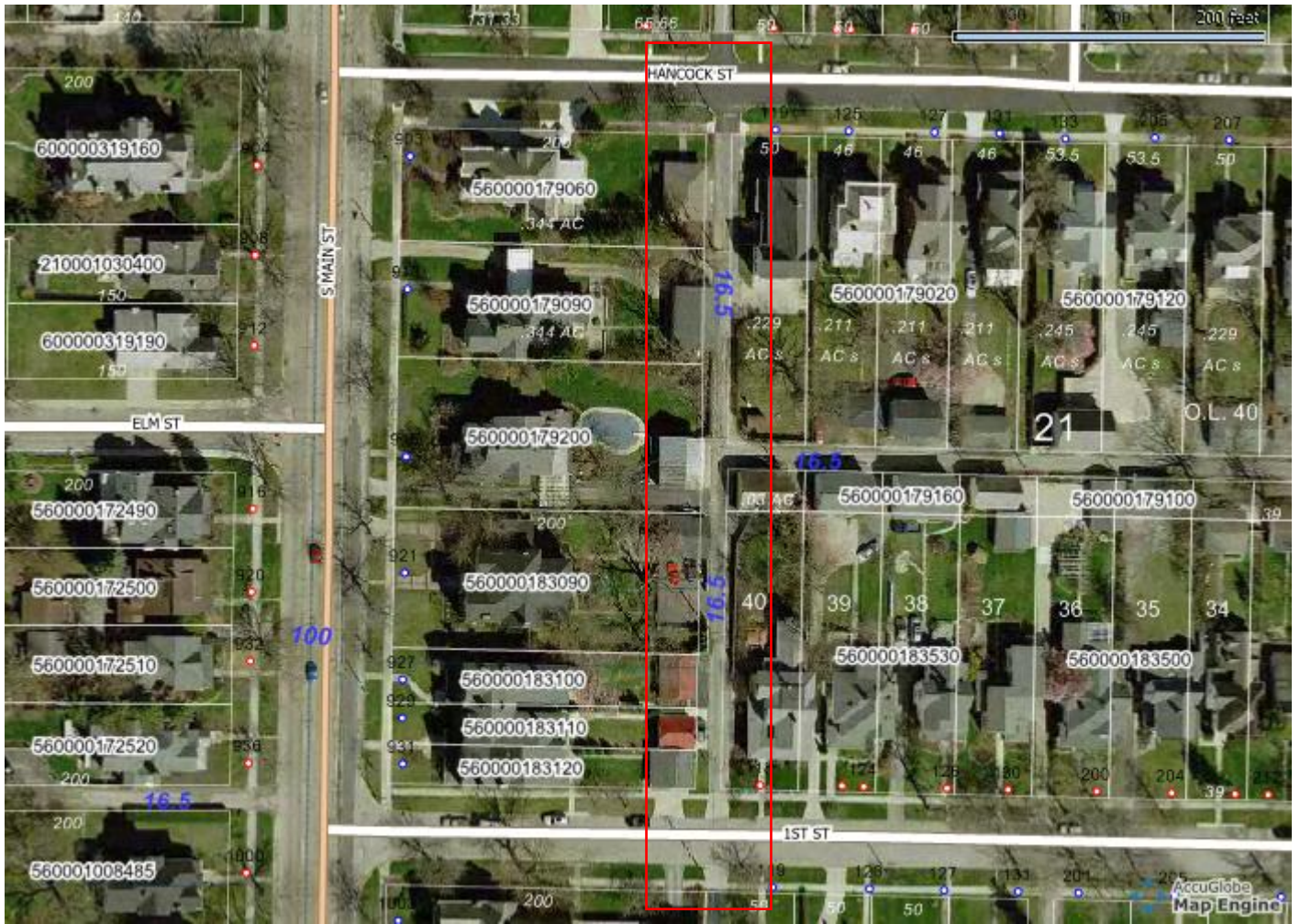
I had a resident request traffic commission look at installing stop signs on the north/south alley just east of Main, between 1st and Hancock streets.

Paul E. Schmelzer, P.E., P.S.

Safety - Service Director
City of Findlay
318 Dorney Plaza, Room 310
Findlay, Ohio 45840

Phone: 419.424.7137

Hancock County GIS



Notes

Request for stop signs at alley intersection

Kathy Launder

From: Demuth, Tom <tdemuth@ci.findlay.oh.us>
Sent: Friday, December 30, 2016 3:27 PM
To: TrafficCommission@FindlayOhio.com
Subject: Lima Ave Pedestrian Signs
Attachments: DSCN2103.JPG; DSCN2105.JPG; DSCN2110.JPG; DSCN2112.JPG; SKM_224e16123014540.pdf

Dear Members,

Recently there have been 4 pedestrian crosswalk signs (R1-6) installed on Lima Ave in front of Cooper. According to the MUTCD chapter 2 Section 2B.12 These signs are not to be used with a signalized crosswalk. These signs are conflicting with the signals. These signs are confusing to drivers and pedestrians. Drivers have the green light and pedestrians are saying they have the right of way due to the signs.

There are two ways to remedy this situation, we can either remove the signs and keep the signals or remove the signals and keep the signs.

Thomas DeMuth
Findlay Traffic Signals
419-424-7185



STAY LANE
ROAD WORK AHEAD

35

25



STAY OFF
WALK

Clear Mark
Equipment

ONE
Way

ONE
Way





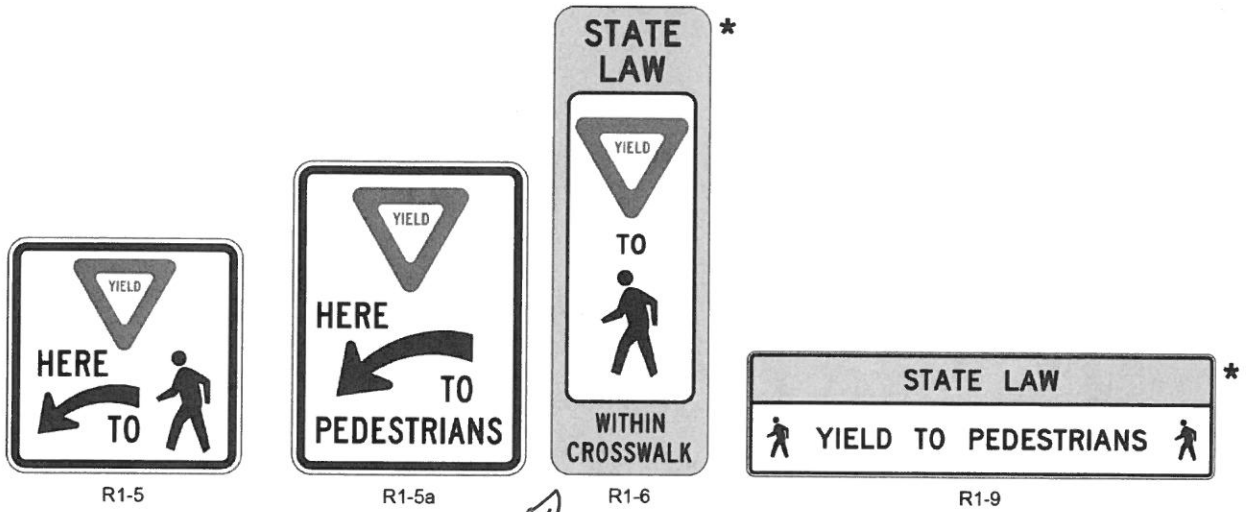


STATE
LAW



BEHOLD
OCCUPANTS

Figure 2B-2. Unsignalized Pedestrian Crosswalk Signs



* The Legend STATE LAW is optional. A fluorescent yellow-green background color may be used instead of yellow for this sign.

05 A Pedestrian Crossing (W11-2) warning sign may be placed overhead or may be post-mounted with a diagonal downward pointing arrow (W16-7P) plaque at the crosswalk location where Yield Here To Pedestrians signs have been installed in advance of the crosswalk.

Standard:

06 If a W11-2 sign has been post-mounted at the crosswalk location where a Yield Here To Pedestrians sign is used on the approach, the Yield Here To Pedestrians sign shall not be placed on the same post as or block the road user's view of the W11-2 sign.

Option:

07 An advance Pedestrian Crossing (W11-2) warning sign with an AHEAD or a distance supplemental plaque may be used in conjunction with a Yield Here To Pedestrians sign on the approach to the same crosswalk.

08 In-Street Pedestrian Crossing signs and Yield Here To Pedestrians signs may be used together at the same crosswalk.

Section 2B.12 In-Street and Overhead Pedestrian Crossing Signs (R1-6, R1-9)

Option:

01 The In-Street Pedestrian Crossing (R1-6) sign (see Figure 2B-2) or the Overhead Pedestrian Crossing (R1-9) sign (see Figure 2B-2) may be used to remind road users of laws regarding right-of-way at an unsignalized pedestrian crosswalk. The legend STATE LAW may be displayed at the top of the R1-6 and R1-9 signs. On the R1-6 sign, the legend YIELD may be used in conjunction with the appropriate YIELD sign symbol.

02 Highway agencies may develop and apply criteria for determining the applicability of In-Street Pedestrian Crossing signs.

Standard:

03 If used, the In-Street Pedestrian Crossing sign shall be placed in the roadway at the crosswalk location on the center line, on a lane line, or on a median island. The In-Street Pedestrian Crossing sign shall not be post-mounted on the left-hand or right-hand side of the roadway.

04 If used, the Overhead Pedestrian Crossing sign shall be placed over the roadway at the crosswalk location.

05 **An In-Street or Overhead Pedestrian Crossing sign shall not be placed in advance of the crosswalk to educate road users about the State law prior to reaching the crosswalk, nor shall it be installed as an educational display that is not near any crosswalk.**

Guidance:

06 *If an island (see Chapter 3I) is available, the In-Street Pedestrian Crossing sign, if used, should be placed on the island.*

Option:

07 If a Pedestrian Crossing (W11-2) warning sign is used in combination with an In-Street or an Overhead Pedestrian Crossing sign, the W11-2 sign with a diagonal downward pointing arrow (W16-7P) plaque may be post-mounted on the right-hand side of the roadway at the crosswalk location.

Standard:

08 **The In-Street Pedestrian Crossing sign and the Overhead Pedestrian Crossing sign shall not be used at signalized locations.**

09 **The In-Street Pedestrian Crossing sign shall have a black legend (except for the red YIELD sign symbol) and border on a white background, surrounded by an outer yellow or fluorescent yellow-green background area (see Figure 2B-2). The Overhead Pedestrian Crossing sign shall have a black legend and border on a yellow or fluorescent yellow-green background at the top of the sign and a black legend and border on a white background at the bottom of the sign (see Figure 2B-2).**

10 **Unless the In-Street Pedestrian Crossing sign is placed on a physical island, the sign support shall be designed to bend over and then bounce back to its normal vertical position when struck by a vehicle.**

Support:

11 Provisions of Section 2A.18 concerning mounting height are not applicable for the In-Street Pedestrian Crossing sign.

Standard:

12 **The top of an In-Street Pedestrian Crossing sign shall be a maximum of 4 feet above the pavement surface. The top of an In-Street Pedestrian Crossing sign placed in an island shall be a maximum of 4 feet above the island surface.**

Option:

13 The In-Street Pedestrian Crossing sign may be used seasonally to prevent damage in winter because of plowing operations, and may be removed at night if the pedestrian activity at night is minimal.

14 In-Street Pedestrian Crossing signs, Overhead Pedestrian Crossing signs, and Yield Here To Pedestrians signs may be used together at the same crosswalk.

Section 2B.13 Speed Limit Signs (R2-1, R2-H2b)

Support:

01 Section 4511.21 of the Ohio Revised Code (ORC) establishes statutory speed limits, and prescribes how those speed limits may be altered when an engineering study determines that they do not fit the road and traffic conditions. The process by which an altered speed limit is established is typically referred to as speed zoning. This speed zoning process and the related forms are described in Part 12 of the ODOT "Traffic Engineering Manual" (TEM) (see Section 1A.11).

Standard:

02 **As noted in ORC Section 4511.21 (see Appendix B2) speed zones (other than statutory speed limits) shall only be established on the basis of an engineering study that has been performed in accordance with traffic engineering practices. The engineering study shall include an analysis of the current speed distribution of free-flowing vehicles.**

03 **The Speed Limit (R2-1) sign (see Figure 2B-3) shall display the limit established by law, ordinance, regulation, or as adopted by the authorized agency based on engineering study. The speed limits displayed shall be in multiples of 5 mph.**

04 **Speed Limit (R2-1) signs, indicating speed limits for which posting is required by law, shall be located at the points of change from one speed limit to another.**

Kathy Launder

From: Matt Stoffel <mstoffel@findlayohio.com>
Sent: Thursday, January 05, 2017 8:12 AM
To: Kathy Launder
Subject: Traffic comm

Kathy – On the next traffic commission please add removal of 2 hr. parking signs on Second St by the old Sink Flower shop. The business is no longer there and the signs were created for that business. Also I'll need a letter to council for the Parks grant for 2017. I will get some numbers from Amy and send you that information to get that money transferred into the park budget.
Thanks Matt

Hancock County GIS



Notes

Request to remove 2 hour parking restriction in front of 404 Second Street