



Agenda

OLD BUSINESS

1. Request of The University of Findlay, 1000 North Main Street, for a pedestrian activated light across North Main Street from new admissions office to the campus.

01/19/2016
Item tabled.

2. Request for additional signals at Sandusky Street and Main Street.

01/19/2016
Item tabled.

NEW BUSINESS

1. Request of Marathon Petroleum Company to install a crosswalk across East Sandusky Street at Beech.
2. Request of Marathon Petroleum Company to permanently remove the remaining nine parking spaces on South Main Street directly north of East Lincoln Street on the east side.

Kathy Launder

From: Paul Schmelzer <pschmelzer@findlayohio.com>
Sent: Friday, January 22, 2016 8:37 AM
To: 'Smith, Paul F. (MPC)'
Cc: Kathy Launder
Subject: RE: [EXTERNAL] conflict

Paul,

I will forward this request to Traffic Commission for review.
Thanks.

Paul E. Schmelzer, P.E., P.S.

Safety - Service Director
City of Findlay
318 Dorney Plaza, Room 310
Findlay, Ohio 45840

Phone: 419.424.7137

From: Smith, Paul F. (MPC) [mailto:pfsmith@marathonpetroleum.com]
Sent: Thursday, January 21, 2016 5:32 PM
To: Paul Schmelzer
Subject: RE: [EXTERNAL] conflict

Paul,

Ok.

On another note. Would the city consider putting a crosswalk across Sandusky at Beech? We are getting request from employees and from a safety stand point I have been approached by our safety folks asking if that could be done.

Paul



February 10, 2016

City of Findlay, Traffic Commission
Municipal Building
Findlay, Ohio 45840

RECEIVED
FEB 10 2016
MAYOR'S OFFICE

Members of the Traffic Commission:

On behalf of our client, Marathon Petroleum Company, LP, we are respectfully submitting a request to permanently remove the remaining 9 parking spaces along South Main Street, directly north of East Lincoln Street along the east side of the street. Last year, the commission approved the removal of the 6 spots north of this request. This request will ultimately eliminate all of the parking spaces on the east side of the street from Hardin Street to East Lincoln Street.

The request for removal of the parking spaces is to provide an additional pedestrian area adjacent and vehicle drop off lanes for the new hotel being constructed. The justification for approval is based upon the increase in existing street parking availability upon completion of the 1000 parking space addition created by the MPC Campus Project. Additionally, the properties immediately adjacent to the requested removed parking spaces, along the east side of the South Main Street, are not retail business establishments, and parking is otherwise available to support other nearby retail establishments.

Representatives of Marathon Petroleum will be present at the meeting to address questions pertaining to the above request.

If you should have any questions or comments, please do not hesitate to contact me, or Donald R. Malarky of Marathon Petroleum Company, LP at (419) 421-4542.

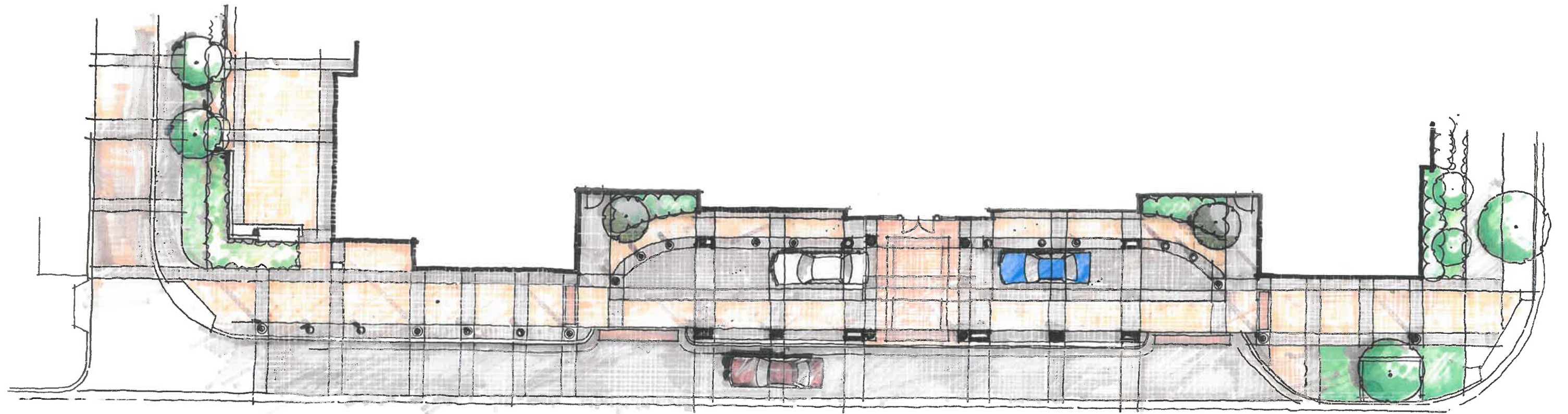
Sincerely,

Daniel R. Stone, P.E., P.S. - Partner
Van Horn, Hoover & Associates, Inc.

Cc: Don Malarky





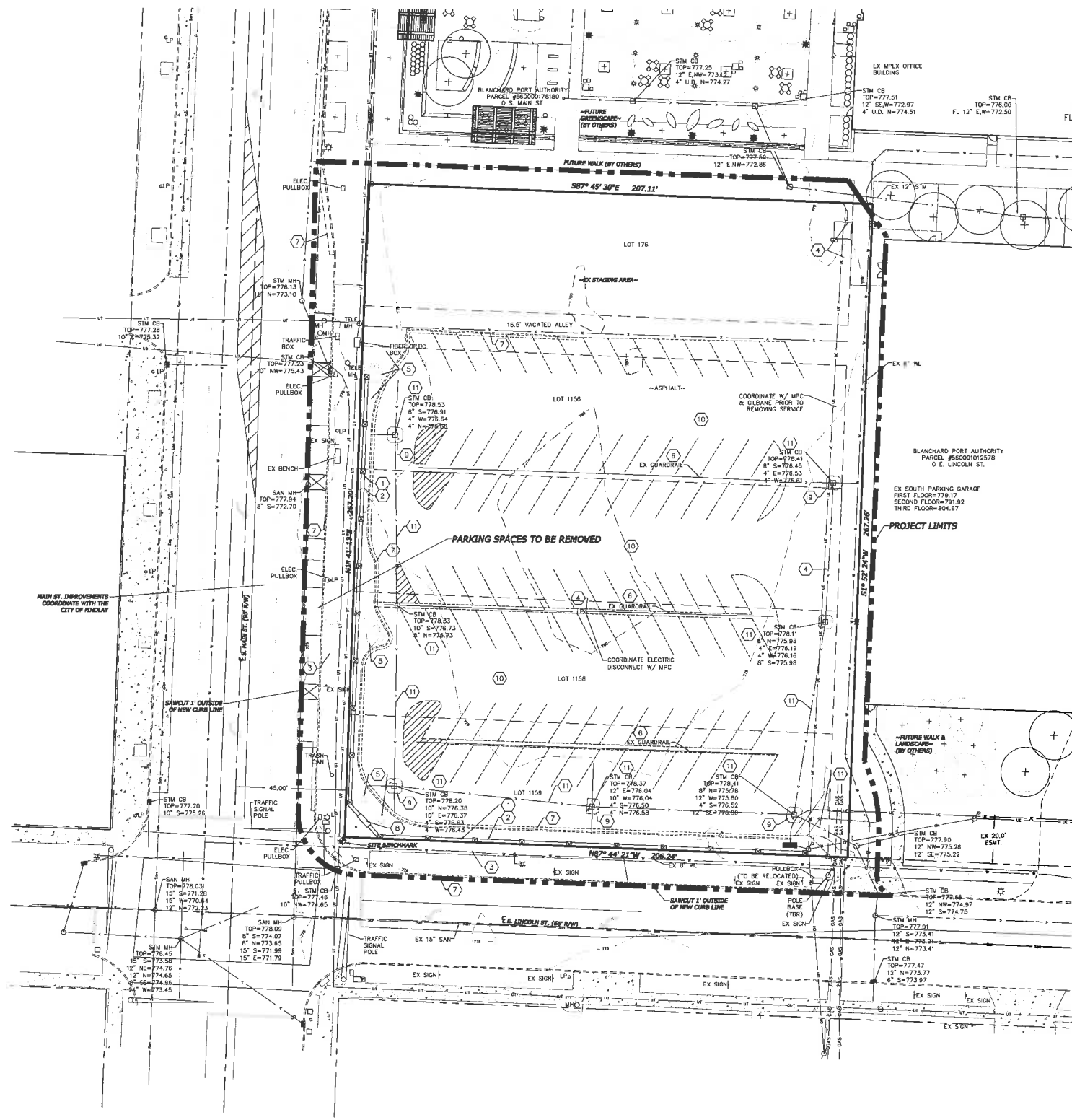
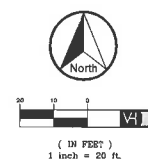






einess swenson graham architects
500 Washington Avenue South
Minneapolis, Minnesota 55415
P. 612.339.5508
F. 612.339.5382
www.esgarch.com

VH
Van Horn Hoover
& Associates, Inc.
SURVEYING
CIVIL ENGINEERING
LAND USE PLANNING
GPS/GIS CONSULTANTS
P.O. BOX 612
FINDLAY, OH 45839
(419) 423-5630
www.VanHornHoover.com
E-Mail: info@VanHornHoover.com



LEGEND

○ REBAR PILE	○ WATER VALVE	— EX FENCELINE
● REBAR PILE W/ MAG. REBAR SET	○ GAS VALVE	— EX WATERLINE
▲ RR SPIKE	□ ELECTRIC TRANSFORMER (ELEC. TRANS.)	— EX SANITARY SEWER
⊕ POWER POLE (PP)	□ TELEPHONE PEDESTAL (TELE. PED.)	— GAS
⊕ TELEPHONE POLE (TP)	— EXISTING TREE	— EX STORM SEWER
⊕ LIGHT POLE (LP)	— EXISTING BUSH	— UNDERGROUND TELEPHONE LINES
○ MANHOLE (MH)	— BUILDING FACE	— OVERHEAD UTILITY
□ DATCH BASIN (CB)	— CURB INLET	— UNDERGROUND ELECTRIC
⊕ HYDRANT	— E/P EDGE OF PAVEMENT	— CONCRETE
— SIGN		
— GUY WIRE		

THE LOCATION OF THE UNDERGROUND AND ABOVEGROUND UTILITIES SHOWN ON THE PLANS ARE OBTAINED FROM FIELD SURVEY. THE EXACT LOCATION AND PROTECTION OF UTILITIES AND STRUCTURES IS THE RESPONSIBILITY OF THE CONTRACTOR. PRIOR TO COMMENCING WORK AND ORDERING MATERIALS CONTRACTOR SHALL FIELD VERIFY THE LOCATIONS AND DEPTHS OF EXISTING UTILITIES TO ENSURE THERE ARE NO CONFLICTS WITH THE PROPOSED WORK. DURING CONSTRUCTION THE CONTRACTOR SHALL USE DUE DILIGENCE TO PROTECT FROM DAMAGE THE EXISTING UTILITIES AND STRUCTURES, WHETHER SHOWN ON THE DRAWING OR NOT. ANY DAMAGE TO EXISTING UTILITIES SHALL BE REPAIRED AT THE CONTRACTOR'S EXPENSE.

NOT FOR CONSTRUCTION

Ohio Utilities Protection Service
811 Know what's below. Call before you dig.
Non - Members
Must Be Called Directly

12/17/15 SITE PLAN REVIEW SET

ORIGINAL ISSUE:
REVISIONS

No.	Description	Date

214322
PROJECT NUMBER
drs drs
DRAWN BY CHECKED BY
KEY PLAN

HANCOCK HOTEL
MARATHON PETROLEUM
CORPORATE CAMPUS
DEMOLITION PLAN
C1.0



eless swenson graham architects
500 Washington Avenue South
Minneapolis Minnesota 55415
P. 612.339.5508
F. 612.339.5382
www.esgarch.com



Van Horn
Hoover
& Associates, Inc.

- SURVEYING
- CIVIL ENGINEERING
- LAND USE PLANNING
- GPS/GIS CONSULTANTS

P.O. BOX 612
FINDLAY, OH 45839
(419) 423-5630

www.VanHornHoover.com
E-Mail: info@VanHornHoover.com



(IN FEET)
1 Inch = 20 Ft.

12/17/15
SITE PLAN
REVIEW SET

ORIGINAL ISSUE:

REVISIONS

No.	Description	Date

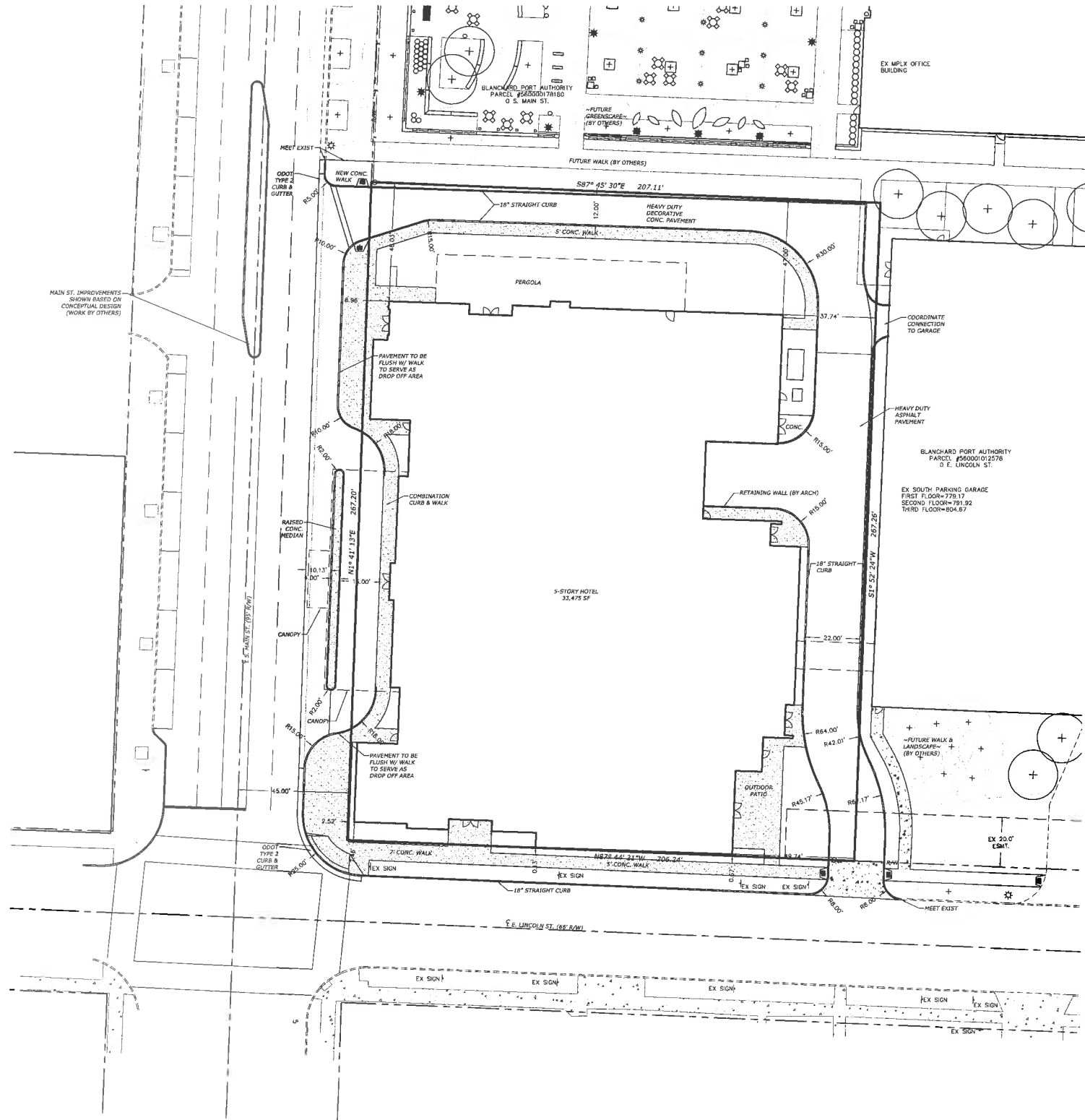
214322
PROJECT NUMBER

drs DRAWN BY
drs CHECKED BY

KEY PLAN

HANCOCK HOTEL
MARATHON PETROLEUM
CORPORATE CAMPUS

DIMENSION PLAN
C2.0



LEGEND

○ HIGH PIPE, MAG. NAL.	⊗ WATER VALVE	— X — EX FENCELINE
● HIGH PIPE, MAG. NAL.	⊗ GAS VALVE	— W — EX WATERLINE
⊕ REBAR SET	⊠ ELECTRIC TRANSFORMER (ELEC. TRANS.)	— S — EX SANITARY SEWER
⚡ POWER POLE (PP)	⊠ TELEPHONE PEDestal (TELE. PED.)	— GAS — EX GAS LINE
⚡ TELEPHONE POLE (TP)	⊠ EXISTING TREE	— S — EX STORM SEWER
⚡ LIGHT POLE (LP)	⊠ EXISTING BUSH	— U — UNDERGROUND TELEPHONE LINES
○ MANHOLE (MH)	⊠ BUILDING FACE	— OH — OVERHEAD UTILITY
⊠ CATCH BASIN (CB)	⊠ CURB INLET	— U — UNDERGROUND ELECTRIC
⊠ HYDRANT	⊠ -600-	— C — EXISTING CONTOUR
⊠ SIGN	⊠ -E/P- EDGE OF PAVEMENT	⊠ CONCRETE
⊠ DUY WIRE		

⊠ THE LOCATION OF THE UNDERGROUND AND ABOVEGROUND UTILITIES SHOWN ON THE PLANS ARE OBTAINED FROM FIELD SURVEY. THE EXACT LOCATION AND PROTECTION OF UTILITIES AND STRUCTURES IS THE RESPONSIBILITY OF THE CONTRACTOR. PRIOR TO COMMENCING WORK AND ORDERING MATERIALS CONTRACTOR SHALL FIELD VERIFY THE LOCATIONS AND DEPTHS OF EXISTING UTILITIES TO ENSURE THERE ARE NO CONFLICTS WITH THE PROPOSED WORK. DURING CONSTRUCTION THE CONTRACTOR SHALL USE DUE DILIGENCE TO PROTECT FROM DAMAGE THE EXISTING UTILITIES AND STRUCTURES, WHETHER SHOWN ON THE DRAWING OR NOT. ANY DAMAGE TO EXISTING UTILITIES SHALL BE REPAIRED AT THE CONTRACTOR'S EXPENSE.

NOT FOR
CONSTRUCTION

Ohio Utilities
Protection Service



Non - Members
Must Be Called Directly