



TRAFFIC COMMISSION
TUESDAY, January 20, 2015 ♦ 2:30 p.m.
Municipal Building, Third Floor Conference Room

Agenda

OLD BUSINESS

1. Request of Mayor Lydia Mihalik for a crosswalk on East Sandusky Street at Hunters Creek Drive.

12/15/2014

Motion to table request, by Director Schmelzer, second by Captain Young. Motion passed 4-0.

NEW BUSINESS

1. Request of Marathon Petroleum Company to permanently remove eight (8) on street parking spaces on the south side of East Sandusky Street (four (4) parking spaces west of Beech Avenue and four (4) parking spaces east of Beech Avenue).

Kathy Launder

From: Lydia Mihalik <lydiamihalik@gmail.com>
Sent: Thursday, November 20, 2014 3:01 PM
To: Kathy Launder
Subject: Traffic Commission

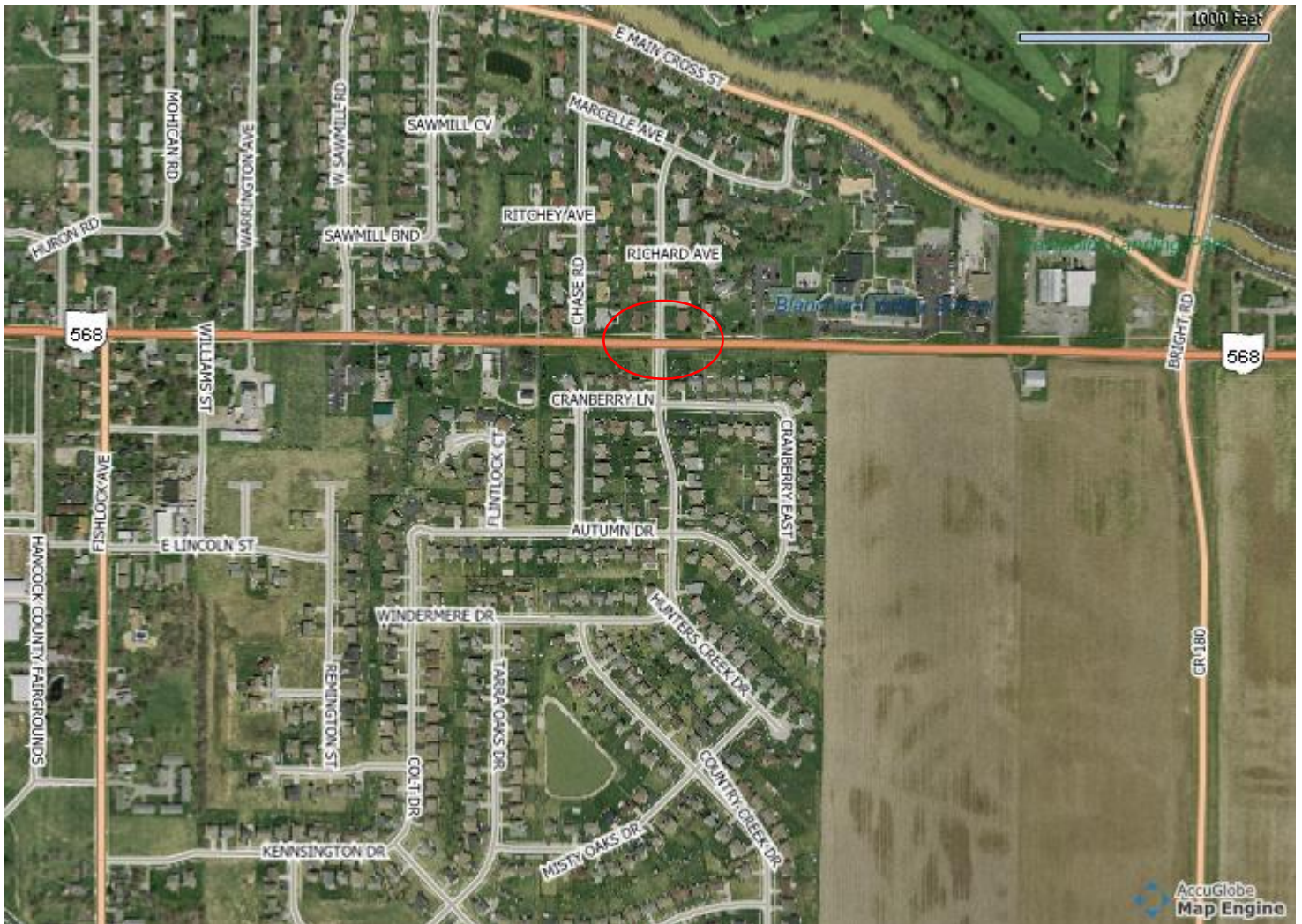
2 things to consider:

~~Increasing the speed limit on Emma St from 25 to 35.~~

Crosswalk at Hunters Creek Dr and Sandusky St.

Sent from my iPhone

Hancock County GIS



Notes

Request for crosswalk across Sandusky Street at Hunters Creek Drive



Marathon Petroleum Company LP

January 13, 2015

539 South Main Street
Findlay, OH 45840
Telephone 419/422-2121
FAX 419/421-2509

Mr. Paul Schmelzer
c/o Traffic Commission
City of Findlay
318 Dorney Plaza
Findlay, Ohio 45840

RE: Request to remove eight (8) on-street parking spaces on Sandusky Street

Dear Mr. Traffic Commission Members:

As part of the Marathon Petroleum Company (MPC) headquarters expansion, a new parking garage is being constructed at the southwest corner of Sandusky and East Streets (North Garage). As a part of the project plans, Beech Avenue will be changed from one-way to two-way traffic flow, from Hardin Street to Sandusky Street. Due to the North Garage construction and associated changes in traffic, MPC is requesting removal of eight (8) on-street parking spaces along the south side of Sandusky Street, between South Main and East Streets (see attached figure showing the location of these parking spaces). With Beech Avenue becoming two-way between Hardin Street and Sandusky Street, drivers will be traveling northbound on Beech Avenue and turning onto Sandusky Street. In order to accommodate proper sight distance for these drivers, eight parking spaces are requested to be removed (four west of Beech Avenue and four east of Beech Avenue). This will allow for a 335 foot sight distance on each side, which is the recommended distance for 30 mph traffic on Sandusky Street. Without proper sight distance, drivers would need to advance into the crosswalk, or possibly the eastbound thru lane, to see oncoming vehicles, causing the oncoming vehicles to brake suddenly and increasing the risk of an accident.

During the afternoon peak hour, DLZ Ohio, Inc. (DLZ), our traffic engineering consultant, estimated approximately 400 vehicles will exit the new North Garage. This will temporarily create congestion along Sandusky Street at East Street, particularly in the eastbound direction. To accommodate as much vehicle storage length as possible in the eastbound direction, it is necessary to remove the parking spaces on the south side of Sandusky Street, east of Beech Avenue.

The majority of the businesses along the north side of Sandusky Street from Beech Avenue to East Street currently have existing off-street parking lots. In addition, there are 14 on-street parking spaces available on the north side of Sandusky Street between Main Street and East Street. With the completion of our North Garage, there will be an additional 426 parking spaces as compared to the previous surface parking spaces located on the garage site. Because of the additional parking spaces that the new garage will hold, we believe that the loss of eight on-street parking spaces along the south side of Sandusky Street will not be a detriment to the City or the surrounding businesses.

Sincerely,

Donald R. Malarky
Engineering Manager
Marathon Petroleum Company

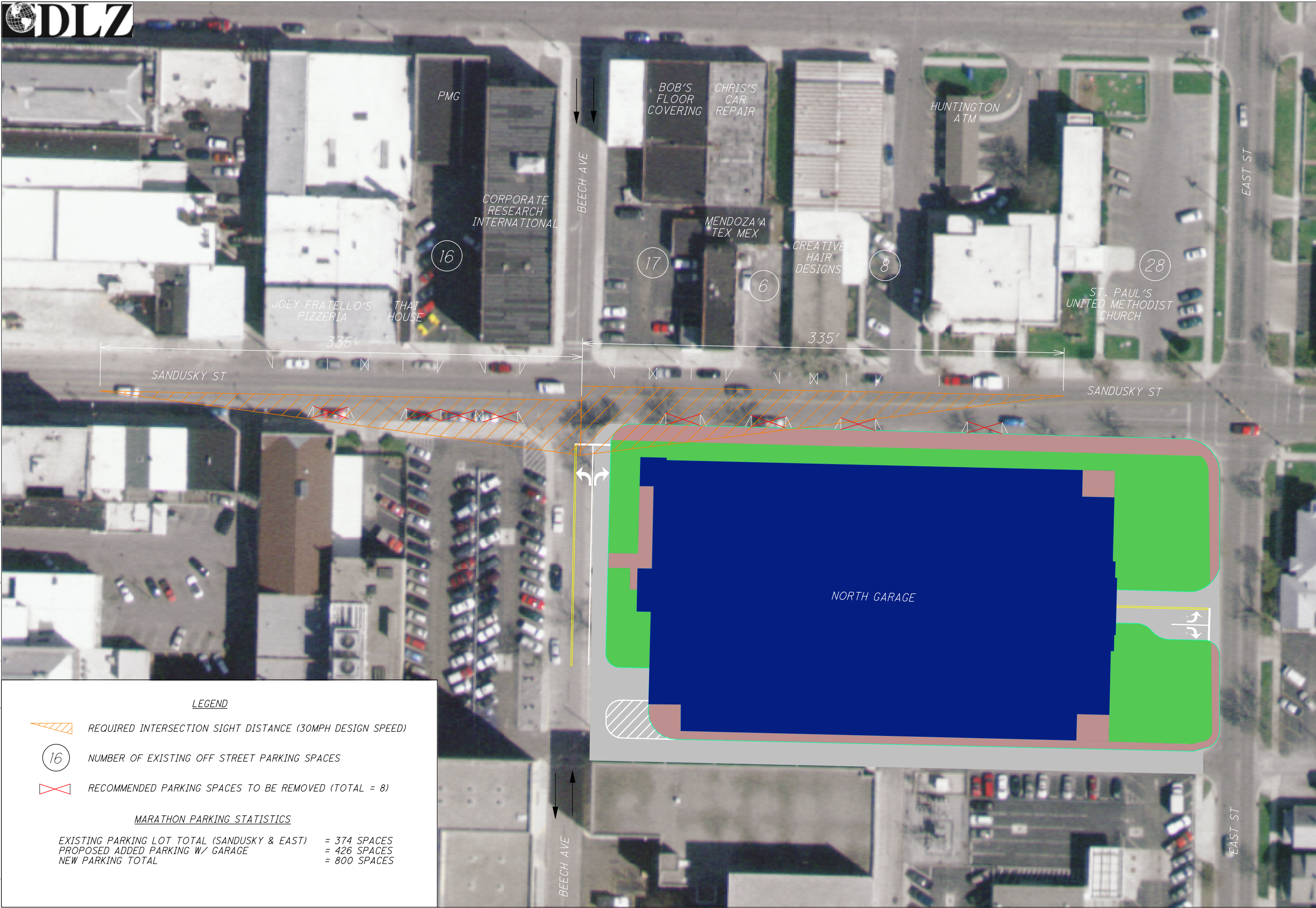
DRM/lan

N:\SEC\CONST\LETTERS\MALARKY\CITYOFFINDLAYTRAFFICCOMMISSION




cc: Daniel Biebertiz, P.E., PTOE,
DLZ Ohio, Inc.



CALCULATED 0 30 60
 DGL
 CHECKED
 DCB
 15
 HORIZONTAL
 SCALE IN FEET



LEGEND

-  REQUIRED INTERSECTION SIGHT DISTANCE (30MPH DESIGN SPEED)
-  NUMBER OF EXISTING OFF STREET PARKING SPACES
-  RECOMMENDED PARKING SPACES TO BE REMOVED (TOTAL = 8)

MARATHON PARKING STATISTICS

EXISTING PARKING LOT TOTAL (SANDUSKY & EAST) = 374 SPACES
 PROPOSED ADDED PARKING W/ GARAGE = 426 SPACES
 NEW PARKING TOTAL = 800 SPACES

**SANDUSKY STREET
 PARKING REMOVAL APPLICATION**

MARATHON

M:\proj\1321\1009 Marathon\02 Beech\Drawings\Sandusky Street NoParking Application.dgn 1/12/2015 11:06:16 AM dbieberitz