

GENERAL NOTES:

- 1) ALL ROOF DRAINS TO SPLASH BLOCK ONTO SURFACE.
- 2) ALL GRADES ARE PAVEMENT GRADES UNLESS OTHERWISE NOTED.



Van Horn Hoover
& Associates, Inc.

- SURVEYING
- CIVIL ENGINEERING
- LAND USE PLANNING
- GPS/GIS CONSULTANTS

P.O. BOX 612
FINDLAY, OH 45839
(419) 423-5630

www.VanHornHoover.com

E-Mail:
Info@VanHornHoover.com



(IN FEET)
1 inch = 30 ft.

PREPARED FOR:
DIETSCH BROTHERS
400 West Main Cross
Findlay, OH

GRADING/UTILITY PLAN

REVISIONS		
MARK	DATE	DESCRIPTION

PLOTS SCALE: 1:1

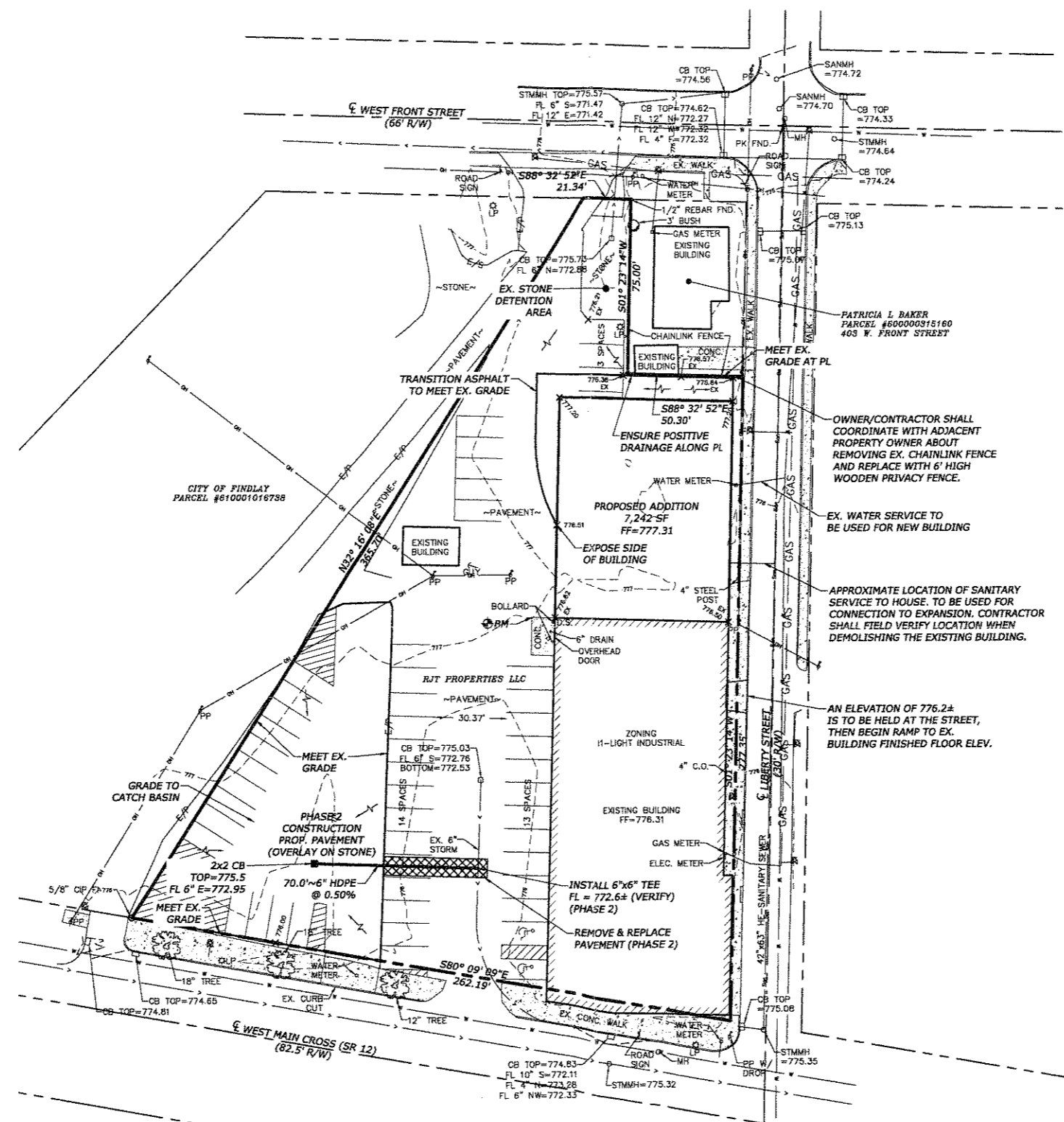
DRAWN: **DRS** CHECKED: **DRS**

DRAWING SCALE: 1"=30'

DATE: 3/14/13

JOB NUMBER: z:\projects\12562

SHEET NUMBER: **SP3**



GRADING LEGEND

- 691 --- EXISTING CONTOUR
- 691 --- PROPOSED CONTOUR
- x 1112.3 EX EXISTING ELEVATION
- x 1112.50 PROPOSED ELEVATION
- T/W TOP OF WALK
- T/C TOP OF CURB
- RD ROOF DRAIN
- ← FLOOD ROUTE PATH
- SURFACE FLOW DIRECTION

LEGEND

- IRON PIPE, MAG NAIL, REBAR END
- IRON PIPE, MAG NAIL, REBAR SET
- ▲ RR SPIKE
- ⊕ POWER POLE (PP)
- ⊕ TELEPHONE POLE (TP)
- ⊕ LIGHT POLE (LP)
- MANHOLE (MH)
- CATCH BASIN (CB)
- ⊕ HYDRANT
- SIGN
- GUY WIRE
- ⊕ WATER VALVE
- ⊕ GAS VALVE
- ELECTRIC TRANSFORMER (ELEC. TRANS.)
- TELEPHONE PEDESTAL (TELE. PED.)
- ⊕ EXISTING TREE
- EXISTING BUSH
- ▭ BUILDING FACE
- ▭ CURB INLET
- E-P- EDGE OF PAVEMENT
- EX FENCELINE
- EX WATERLINE
- EX SANITARY SEWER
- EX GAS LINE
- EX STORM SEWER
- UT UNDERGROUND TELEPHONE LINES
- OH OVERHEAD UTILITY
- UE UNDERGROUND ELECTRIC
- 600 --- EXISTING CONTOUR
- ▭ CONCRETE

OHIO Utilities Protection SERVICE
Call Before You Dig
1-800-362-2764

THE LOCATION OF THE UNDERGROUND AND ABOVEGROUND UTILITIES SHOWN ON THE PLANS ARE OBTAINED FROM FIELD SURVEY. THE EXACT LOCATION AND PROTECTION OF UTILITIES AND STRUCTURES IS THE RESPONSIBILITY OF THE CONTRACTOR PRIOR TO COMMENCING WORK AND ORDERING MATERIALS. CONTRACTOR SHALL FIELD VERIFY THE LOCATIONS AND DEPTHS OF EXISTING UTILITIES TO ENSURE THERE ARE NOT CONFLICTS WITH THE PROPOSED WORK. DURING CONSTRUCTION THE CONTRACTOR SHALL USE DUE DILIGENCE TO PROTECT FROM DAMAGE THE EXISTING UTILITIES AND STRUCTURES, WHETHER SHOWN ON THE DRAWING OR NOT. ANY DAMAGE TO EXISTING UTILITIES SHALL BE REPAIRED AT THE CONTRACTOR'S EXPENSE.

Z:\PROJECTS\12562\12562.dwg - d.stone - Mar 21, 2013