



EMORY ADAMS PARK AND PLAYGROUND MASTER PLAN



VISION GOALS AND OBJECTIVES

Vision Statement:

Emory Adams Park is the City of Findlay's **year-round destination** for active recreation, play, fitness, and connections to nature. The park facilities provide **engaging and varied activities** for **all ages and abilities**.

Goals:

Create a **fun-filled** and **inclusive** playground that **honors the historical Fort Findlay**.

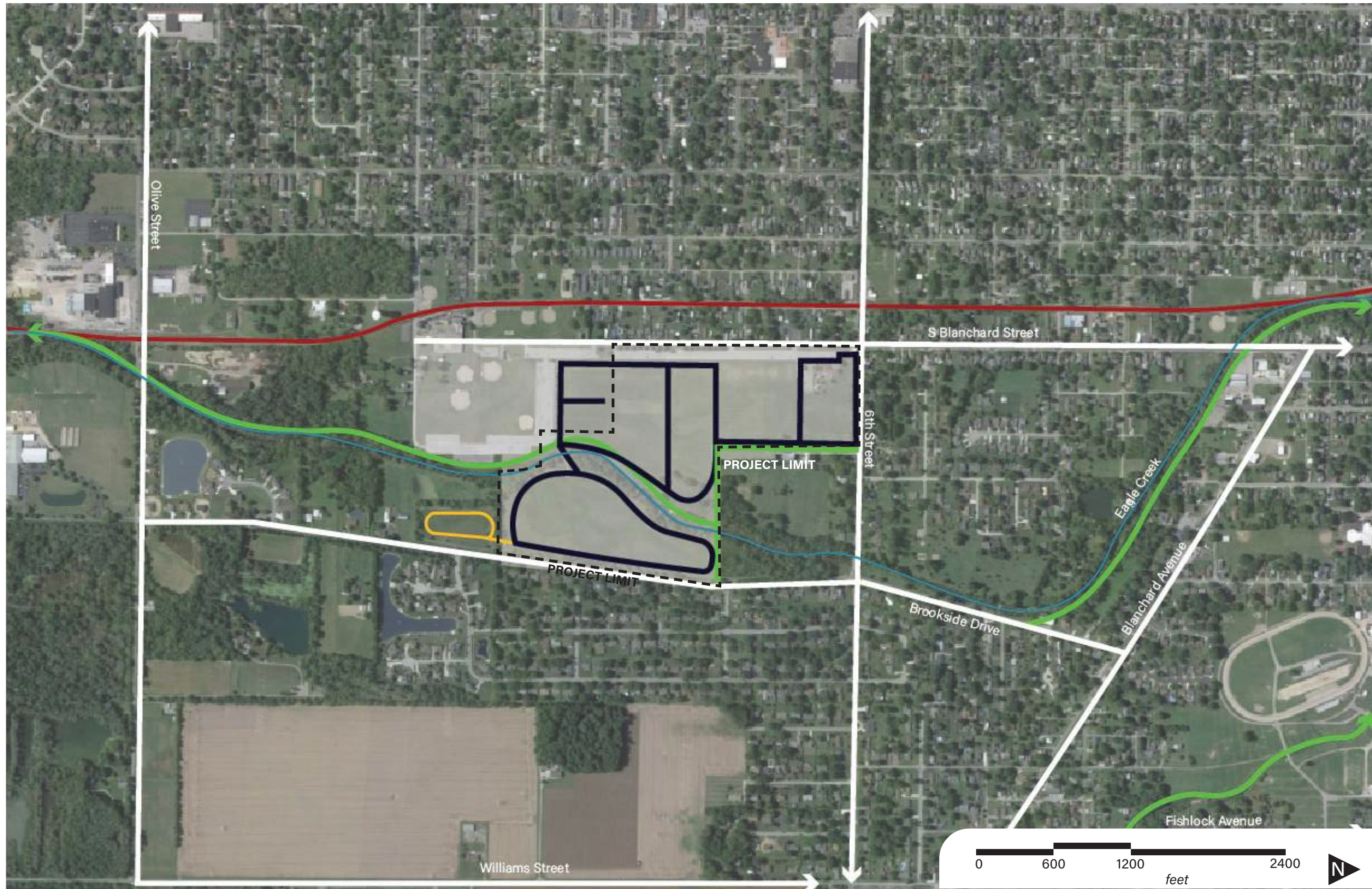
- Create an environment that **encourages exploration** and physical challenges.
- Provide a **wide variety of play features** and experiences for **all ages and abilities**.
- Provide **shade** and places for children and their caregivers to **sit and gather**.

- Integrate **exploration opportunities** in the play equipment and environment.
- Select equipment that **meets ASTM safety standards** and that is **easy to maintain**.
- **Incorporate landscaping** within the playground and **enclose the area with a fence**.
- Provide nearby **shelters and restrooms** that are **architecturally compatible with the fort structure**.
- Consider **integrating community-generated artwork** into the playground.
- Incorporate **elevation changes** as play elements.

EXISTING AND FUTURE TRAIL CONNECTIONS

LEGEND

- Proposed Greenways
- Proposed Connectors
- Railroad
- Eagle Creek
- Existing Trail System
- Existing County Park Trail



PLAYGROUND CONCEPTUAL EXPLORATION



KEY MAP



CONCEPT 1



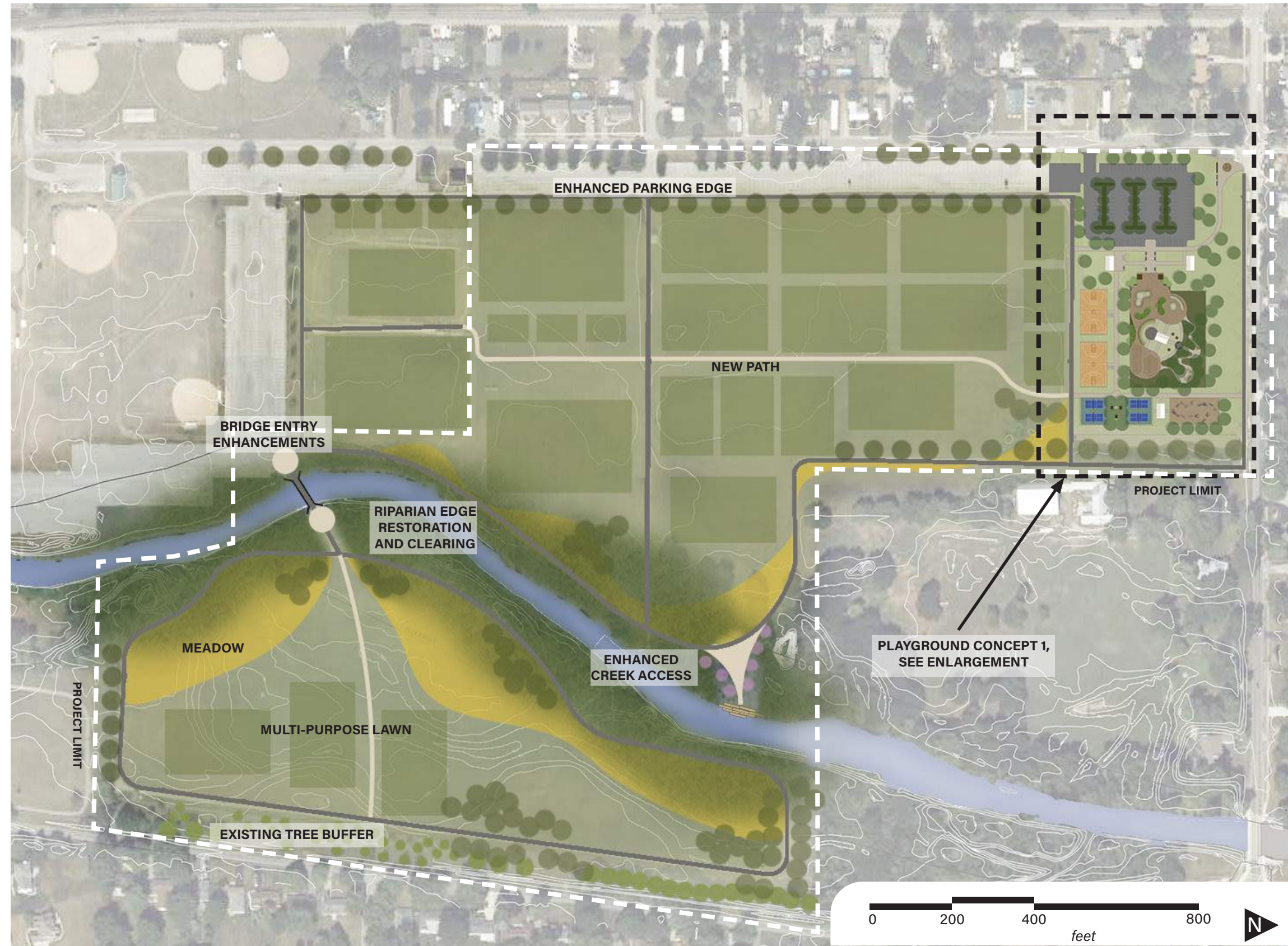
CONCEPT 2



CONCEPT 3

PREFERRED PLAYGROUND LOCATION

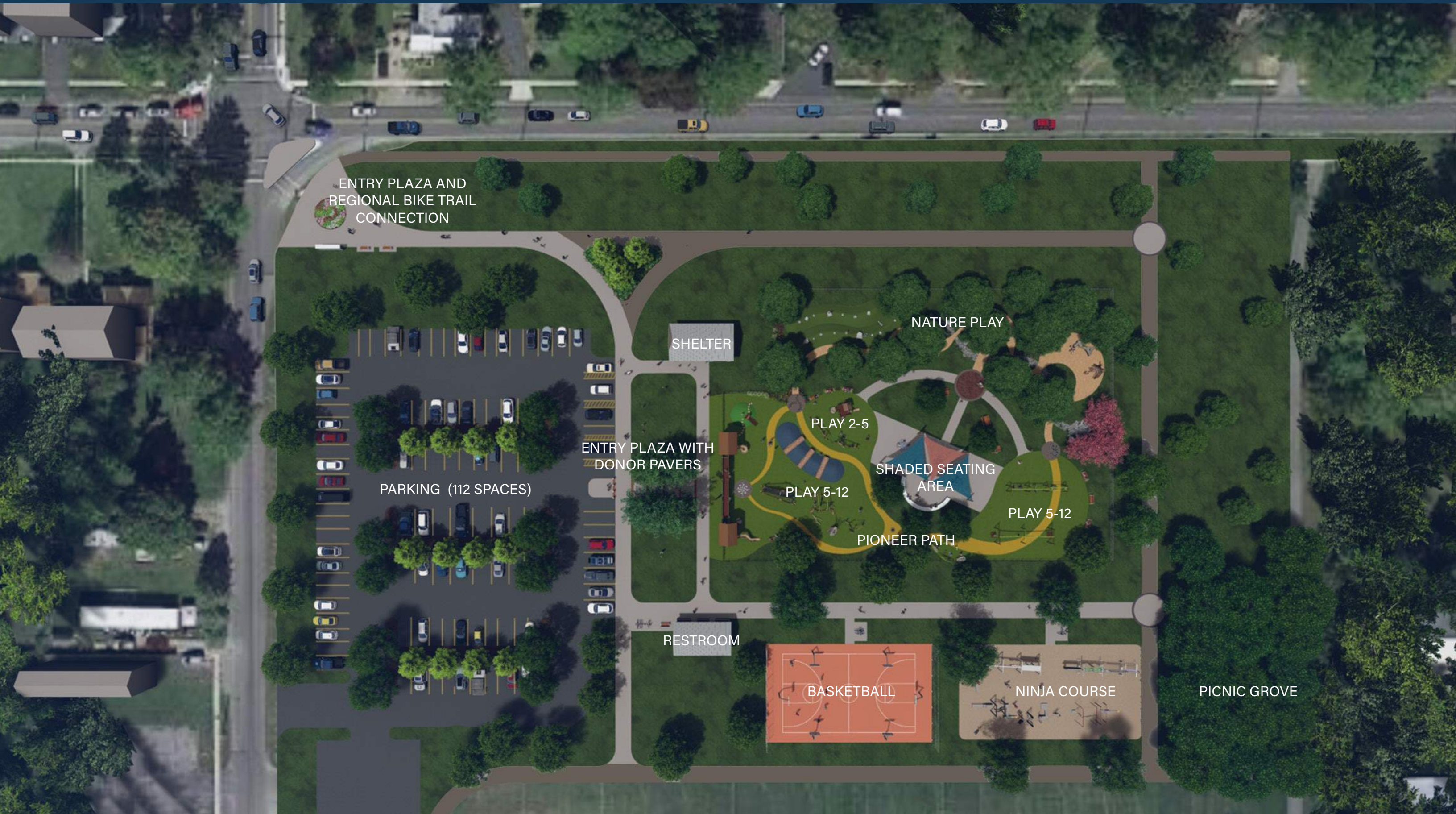
The playground works as a beacon from 6th Street and new path proposals connect the north and south ends of the site. Creek access tucked into a wooded nook for nature exposure.



Feedback:

- Concept 1 location (current playground location) preferred
- Keep parking location and style on Concept 1
- Pursue proposed fort facade
- Would like to incorporate the donor paver art
- Keep the basketball separate from play area and take out second basketball court
- Keep hide and seek aspects of playground as prominent features
- Incorporate lots of mounding and elevation change in play areas
- Create shady spots dispersed throughout the site
- Add a catwalk between fort towers
- Like the idea of a ninja course for older age groups
- Like the picnic grove space

PLAYGROUND PLAN



ENTRY PLAZA AND
REGIONAL BIKE TRAIL
CONNECTION

PARKING (112 SPACES)

SHELTER

ENTRY PLAZA WITH
DONOR PAVERS

NATURE PLAY

PLAY 2-5

PLAY 5-12

SHADED SEATING
AREA

PLAY 5-12

PIONEER PATH

RESTROOM

BASKETBALL

NINJA COURSE

PICNIC GROVE

3D RENDERINGS

OVERALL SITE FROM PARKING LOT



PLAYGROUND ENTRY FROM PARKING LOT



MAIN PLAYGROUND AREA



FORT ENTRY WALK WITH DONOR PAVERS



MOUNDED PLAY WITH HIDE AND SEEK OPPORTUNITIES



AGE 2-5 PLAY SPACE



CLIMBING AND BALANCING PLAY FEATURES



PIONEER PATH THROUGH PLAY AREA



TRANSITION FROM FRONT PLAY SPACE TO BACK PLAY



INSTRUMENT PLAY AREA



PLAYGROUND AND NATURE PLAY LOOKING NORTHWEST



NATURE PLAY PATH



DRY CREEK SEATING AREA



NATURE PLAY WITH DRY CREEK BED



SHADED SEATING AND PICNIC AREA



SHADE SAILS AND SEATING WALL



NATURE PLAY BALANCE FEATURE



MOUNDED PLAY SLOPES WITH BOULDERS



PARK ENTRY ON 6TH ST. AND S BLANCHARD ST.



SHELTER



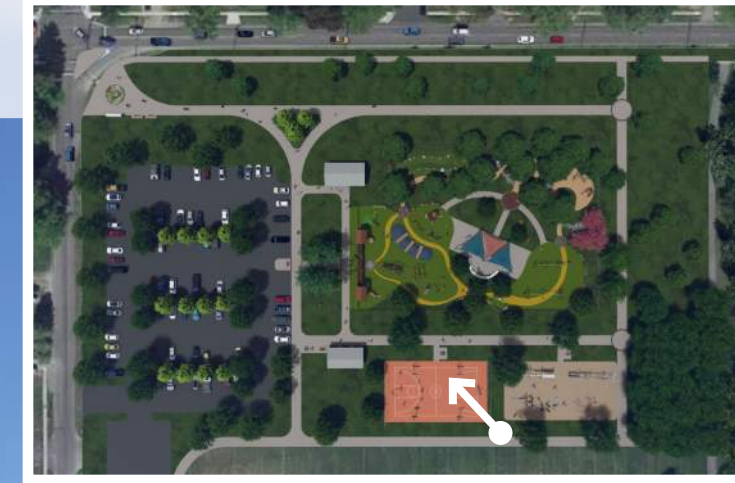
PICNIC GROVE



NINJA COURSE



BASKETBALL COURT



PERIMETER PATH WITH RESTROOM CONNECTION

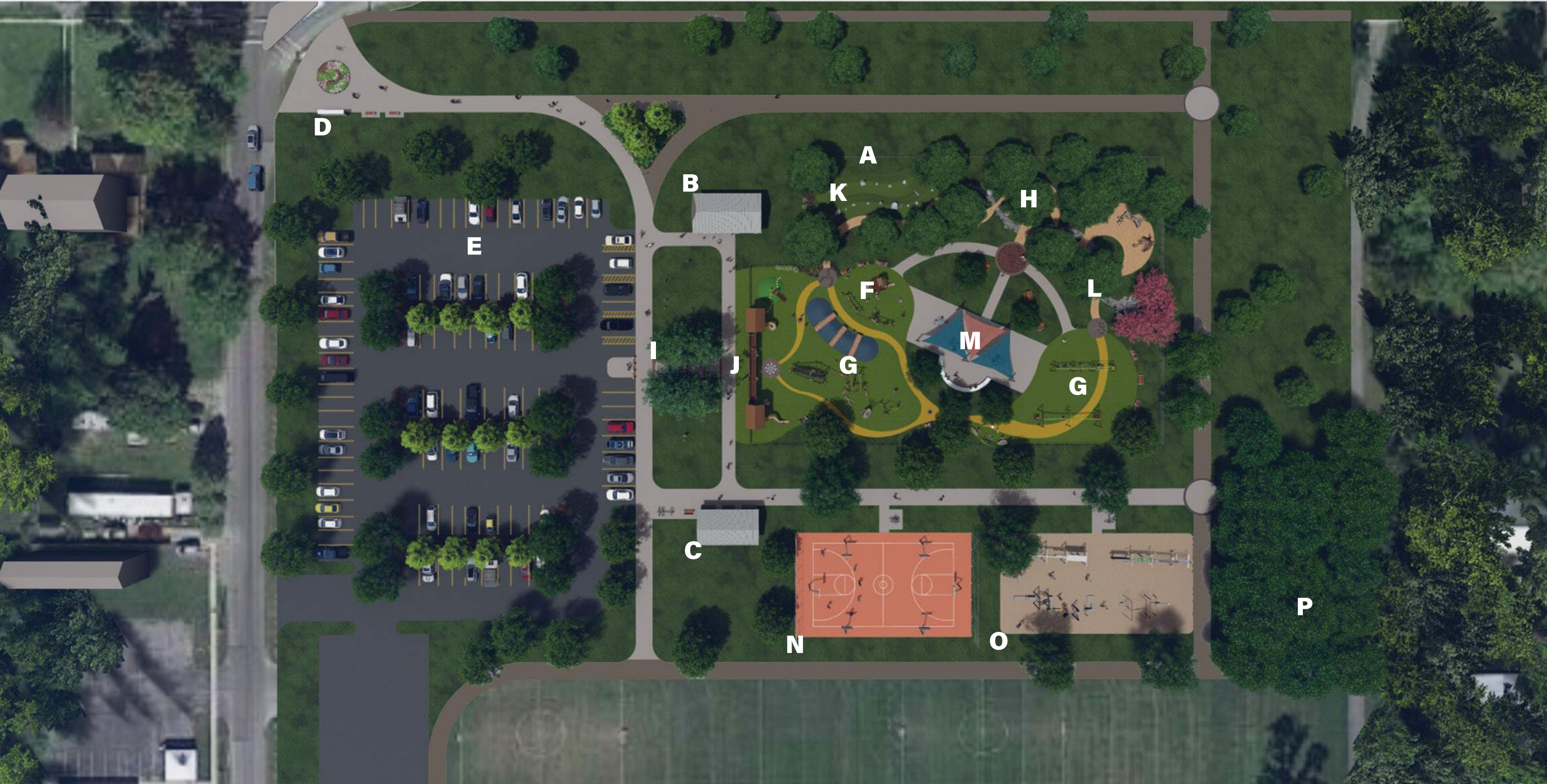


LEGEND

- A.** PERIMETER PLAY FENCE
- B.** SHELTER
- C.** RESTROOM
- D.** ENTRY SIGN
- E.** PARKING

- F.** AGE 2-5 PLAY
- G.** AGE 5-12 PLAY
- H.** NATURE PLAY
- I.** DONOR PAVER BANDING
- J.** FORT PLAY ENTRY
- K.** MOUNDED BOULDER PLAY

- L.** DRY CREEK BED PATH
- M.** SHADED SEATING AREA
- N.** BASKETBALL COURT
- O.** NINJA PLAY
- P.** PICNIC GROVE



THANK YOU!
QUESTIONS?