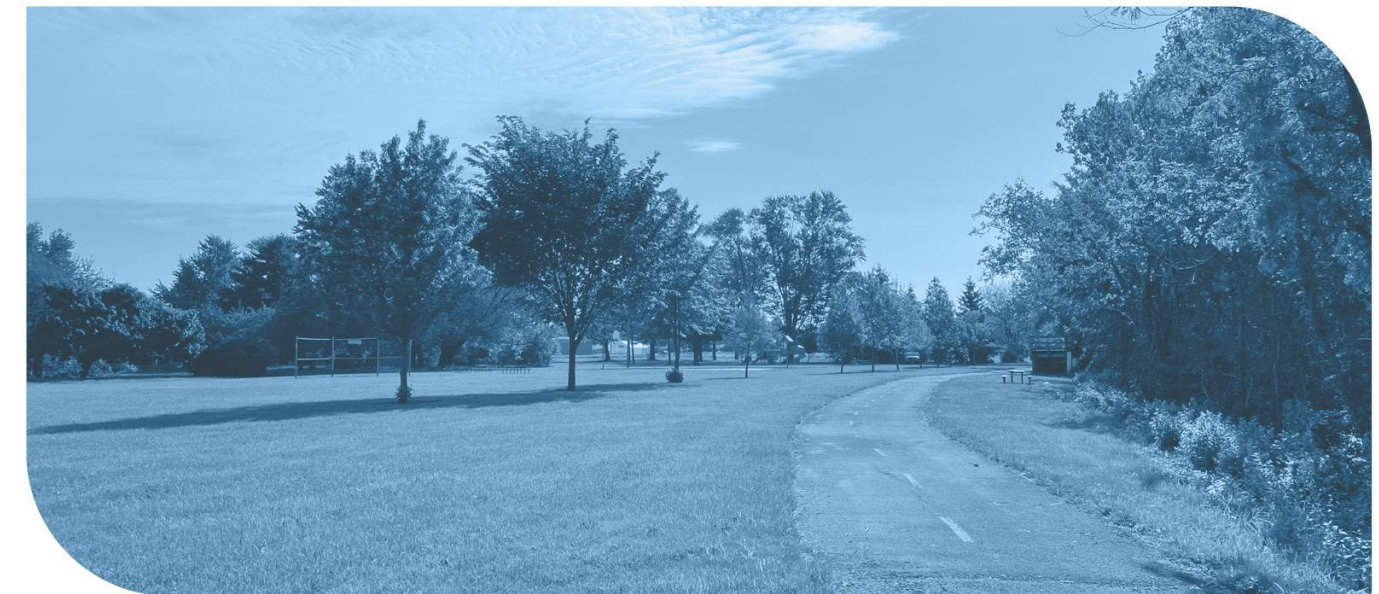
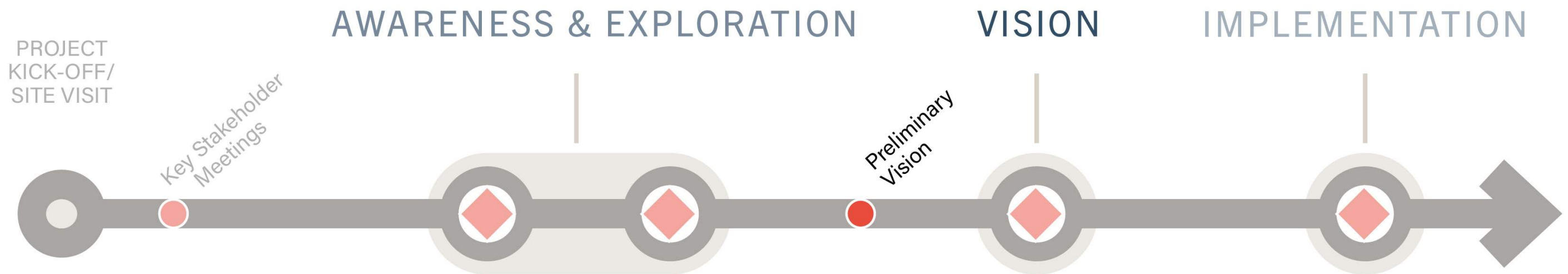


PRELIMINARY VISION
CIVITAN PARK MASTER PLAN



CONTENTS

- Vision, Goals & Objectives
- Feedback Summary
- Preliminary Master Plan
- Feedback: Framework Confirmation

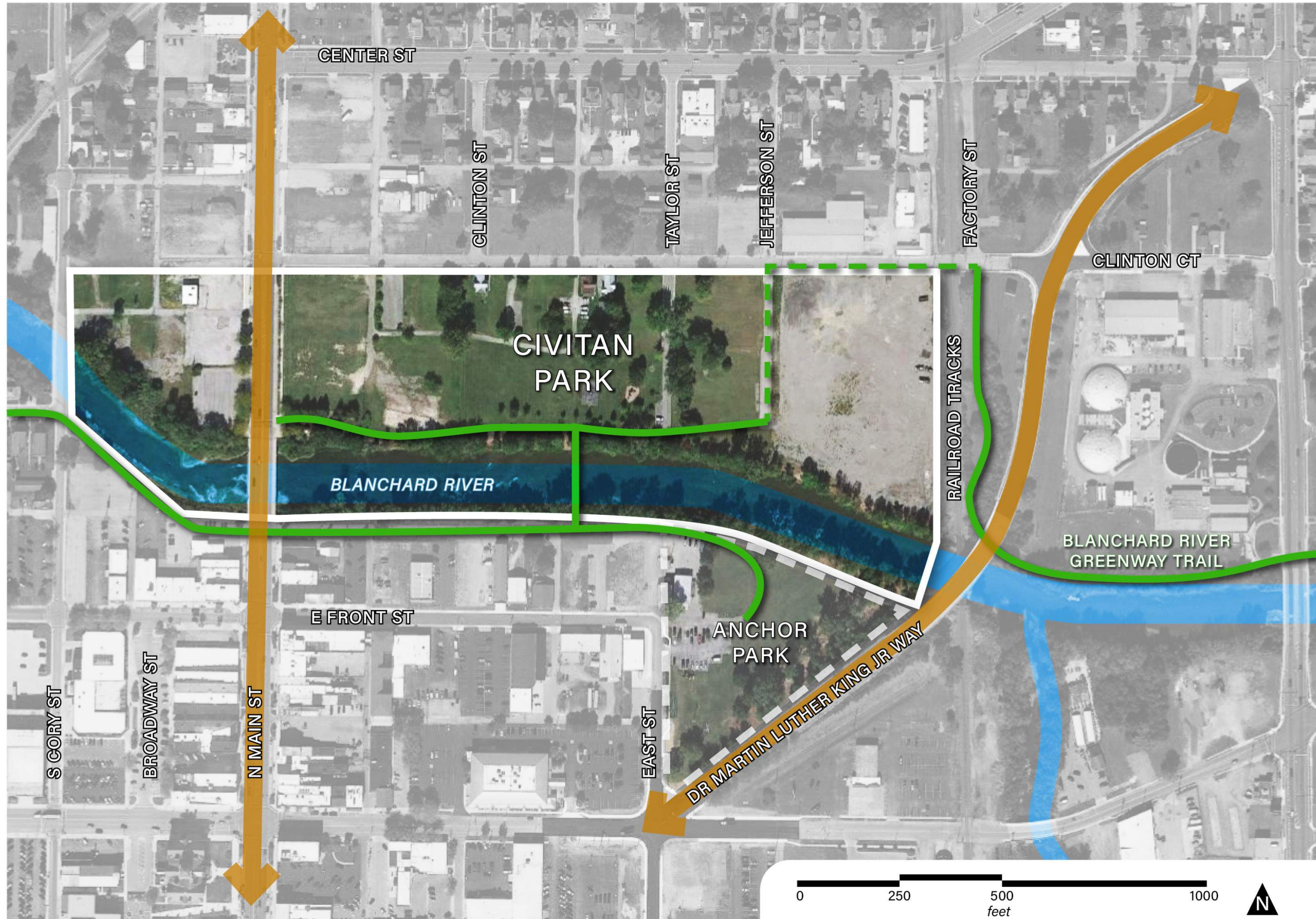


To create a vision for Civitan Park that:

- **Coordinates** with the technical requirements of the **flood control** project and related grading
- **Complements and doesn't compete** with the facilities and features found in other parks throughout the city
- Establishes this important open space as **the community's "living room"** – a place where there is something for everyone and there is always something going on
- Provides a spatial framework and the necessary infrastructure to support **a wide array of community programs, events and spontaneous activities**
- **Celebrates the linkage between the downtown area and the Blanchard River** (both sides) by providing points of access for fishing and canoeing/kayaking, as well as riverbank treatments that are beautiful, sustainable, and cost effective
- Strengthens connections to downtown and adjacent neighborhoods, while also **providing continuity and an important destination** as part of the Blanchard River Greenway/Trail/Blueway
- Integrates themes, forms, features and materials that **celebrate Findlay's unique sense of place**, cultural values and priorities
- **Stimulates investment and revitalization** around it

STUDY AREA

The study area is located north of Downtown Findlay along the Blanchard River between S. Cory St to the west and the railroad to the east.



REGIONAL CONTEXT



CONCEPT SUMMARY

Several concepts were developed to test the following design factors and relationships as a way to bring the best ideas to surface:

- Gateways + Path Locations and Layout
- Community Structure Locations and Types
- Picnic & Play Location
- Recreation Location and Type
- Memorial Integration
- Parking + Arrival
- Serves as Community "Living Room"
- Support Community Programming
- Engagement of the River

CONCEPT A

Legend:

- A Amphitheater
- B Parking
- C River Access/Fishing Spot
- D Multi-Purpose/Wellness Lawn
- E Nature-inspired Play
- F Shelter/Restrooms
- G Picnic Grove/Beer Garden
- H Walking Paths/Fitness Circuit
- I Restaurant
- J Enhancements to Existing Bridge
- K Landscape Buffer for Railroad
- L Trees Along Roadway
- M Promenade
- N Improved Pedestrian Crossing
- O Trail Connection
- P Friendship City Connection (Cherry Trees)

Visuals:

- Tree-lined Promenade
- Kayak Launch and River Access
- Amphitheater pulling from the language of the river
- Nature-inspired Play

AUGUST 2022 | CITY OF FINDLAY | STRAND ASSOCIATES | HUMAN NATURE | 23

CONCEPT B

Legend:

- A Stage/Pavilion
- B Parking
- C River Access/Fishing Spot
- D Multi-Purpose/Wellness Lawn
- E Nature-inspired Play
- F Shelter/Restrooms
- G Picnic Grove/Beer Garden
- H Interactive Water Feature
- I Restaurant
- J New Iconic Bridge
- K Landscape Buffer for Railroad
- L Trees Along Roadway
- M Pergola/Swings
- N Improved Pedestrian Crossing
- O Trail Connection
- P Friendship City Connection (Cherry Trees)

Visuals:

- River-facing restaurant
- Shade and Swings overlook the river
- Interactive Water Feature
- Food Truck/Beer Garden

AUGUST 2022 | CITY OF FINDLAY | STRAND ASSOCIATES | HUMAN NATURE | 24

CONCEPT C

Legend:

- A Amphitheater
- B Parking
- C River Access/Fishing Spot
- D Multi-Purpose/Wellness Lawn
- E Activity Nodes
- F Shelter/Restrooms
- G Picnic Grove/Beer Garden
- H Storybook Path/Interpretive Nodes
- I Restaurant
- J Enhancements to Existing Bridge
- K Landscape Buffer for Railroad
- L Trees Along Roadway
- M Interactive Water Feature/Plaza
- N Improved Pedestrian Crossing
- O Trail Connection
- P Friendship City Connection (Cherry Trees)

Visuals:

- Trails connecting the park to the river
- Activity Nodes offer diverse experience along trail
- River Access & Kayak Launch
- Open Lawn Accommodates Diverse Activities

AUGUST 2022 | CITY OF FINDLAY | STRAND ASSOCIATES | HUMAN NATURE | 25

CONCEPT D

Legend:

- A Stage/Pavilion
- B Parking
- C River Access/Fishing Spot
- D Multi-Purpose/Wellness Lawn
- E Discovery Gardens
- F Shelter/Restrooms
- G Picnic Grove/Beer Garden
- H Multi-purpose Paths
- I Restaurant
- J New Iconic Bridge
- K Landscape Buffer for Railroad
- L Trees Along Roadway
- M Interactive Water Feature/Plaza
- N Improved Pedestrian Crossing
- O Trail Connection
- P Friendship City Connection (Cherry Trees)

Visuals:

- Multi-use trails traverse the park
- Multi-purpose pavilion and plaza serve as Hub
- Discovery Gardens offer nature exploration
- Dramatic new iconic bridge connection

AUGUST 2022 | CITY OF FINDLAY | STRAND ASSOCIATES | HUMAN NATURE | 26

WHAT WE HEARD FROM YOU

- **Lighting** is critical to attracting and making visitors feel safe
- **Iconic bridge** connection into Anchor Park
- **Promote visual and physical access to the river** with selective vegetation along the river, paths and river access points, and riverview swings.
- **Tree-lined promenade** to bring people into the park
- **Parking** distributed throughout the park
- **Centrally-located amphitheater**, tiered with plug-n-play
- **Define a gateway** in and out of Downtown
- Provide **convenient boat loading/river access**
- **Centrally-located play**, not just small pockets
- **Pedestrian pathway** UNDER Main Street Bridge
- Create **food truck hub** for daily use
- **Size “main” path to facilitate festivals and events** without making them look like a road
- Keep **cherry trees** out of frequently flooded areas
- **Make Clinton Court one-way** east from Main Street to railroad tracks with angled parking
- No need for restaurant spaces
- Locate **skate park** west of Main Street
- **Make South Bank a feature** with stone work and natural habitat to make it more attractive from the park and to encourage investment
- Create **shaded picnic areas**
- **Add overflow parking to City/County-owned blocks***
- **Extend Riverwalk east to MLK Mural***

PRELIMINARY MASTER PLAN



LEGEND

- | | | | |
|------------------------------------|--|--|--|
| A Amphitheater | E Adventure Play | J Iconic Bridge | O Trail Connection |
| B Parking | F Sculptural Play | K Landscape Buffer for Railroad | P Friendship City Connection (Cherry Trees) |
| C River Access/Fishing Spot | G Food Truck/Picnic Grove | L Promenade of Peace | Q Riverview Memorial Garden & Swings |
| D Multipurpose Lawn | H Walking Paths/Fitness Circuit | M Court of Pillars (Park Hub) | |
| | I Glacialscape Skate Park | N Improved Pedestrian Crossing | |



PARK OVERVIEW





PROMENADE OF PEACE





PARK HUB & CONNECTIVITY





MAIN STREET GATEWAY





COURT OF PILLARS



PILLARS OF COMMUNITY
(DONOR OPPORTUNITY)

FOOD TRUCK /
PICNIC GROVE

ADVENTURE PLAY

FOUNTAIN PLAZA

SCULPTURE PLAY

HUMAN NATURE, INC.



A BEACON FOR CIVIC ACTIVITY... DAY & NIGHT





A DYNAMIC DOWNTOWN RIVERFRONT DESTINATION



UNDER BRIDGE PATH CONCEPT

